

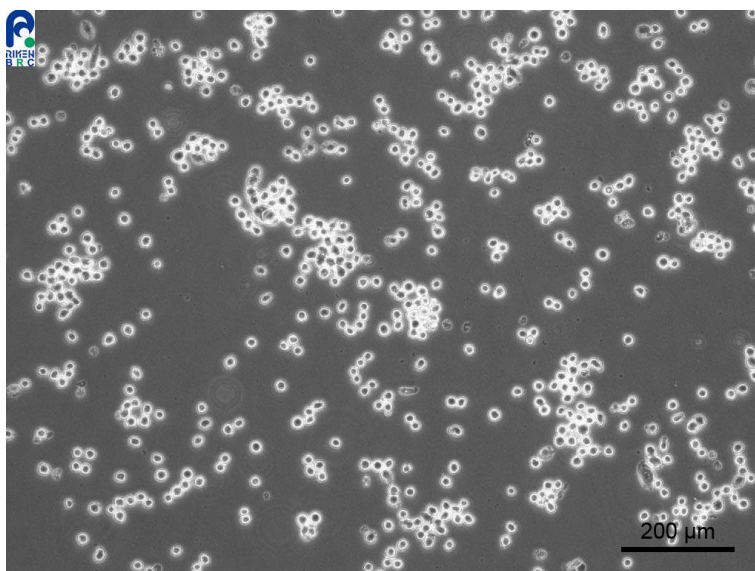
Application consideration

RCB5004 : CHL-YN

Please keep in mind the following:

Shaking culture using a shaker (80 rpm) is necessary.

- **Immediately after thawing cells, sometimes cells show poor proliferation depending on the condition of incubator or shaker. When start culturing the cells, it is recommended to perform both standing and shaking culture.**
- **In the case of poor proliferation please wait until the cells proliferate to some extent with standing culture, and then change it to a shaking culture.**
- **Once the cells start to proliferate vigorously, please continue the culture with a shaking culture.**



【Technical support】 e-mail : cellqa.brc@riken.jp