

## Application consideration

### RCB3683 : HL-60

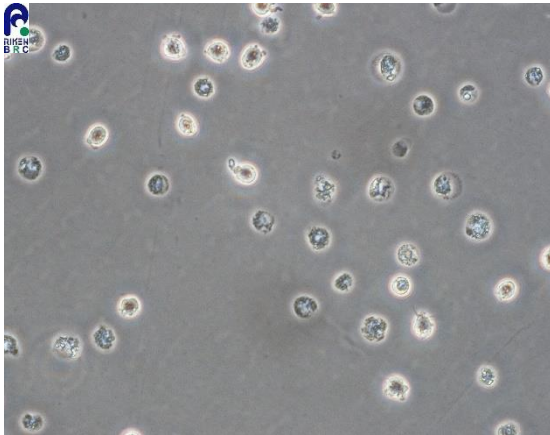
Please keep in mind the following:

- **High percentages of dead cells are observed next day after thawing.**

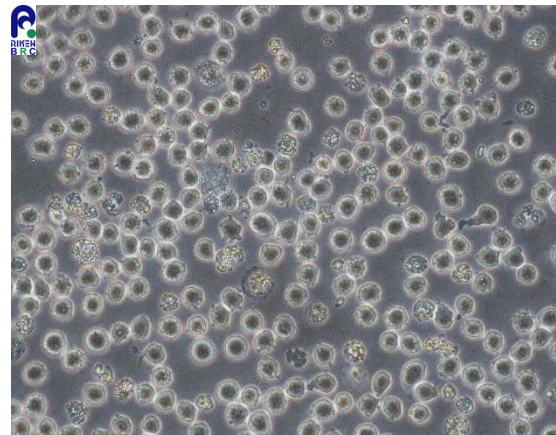
- **It takes around one week for cells to proliferate vigorously.**

**Therefore, please just keep observing cells and only perform addition of fresh medium.**

- **Please passage cells with split ratio 1:4 until cells proliferate vigorously. Cells are prone to result in a poor proliferation at a low cell density.**



**Next day after thawing (x400)**



**After around 1 week (x400)**

【Technical support】 e-mail : [cellqa.brc@riken.jp](mailto:cellqa.brc@riken.jp)