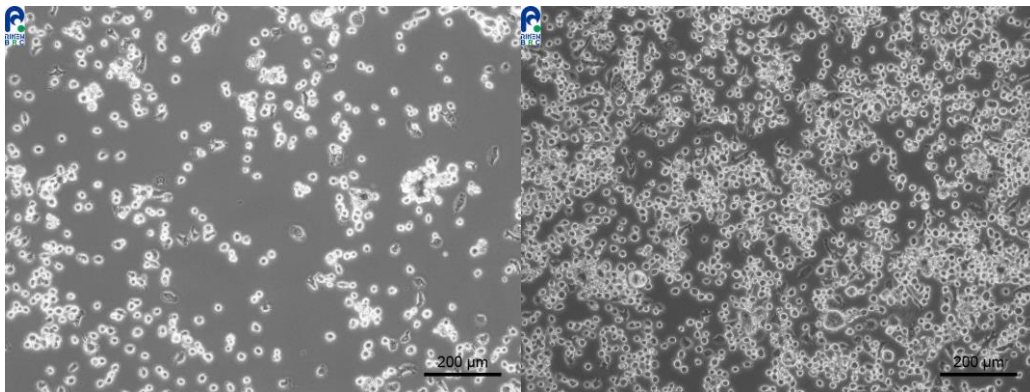


## **Application consideration**

### **RCB2126 :BmN4-IR**

Please keep in mind following points:

- Please thaw the cells quickly at 37°C.  
however note the incubation temperature is 25°C.
- Please use a flask possessing a cap without a filter and tightly screw the cap during culture.
- This cell line grows slowly.
- Please do not plate the cells at a low density.



The cells attached to the culture vessel  
and are shown proliferating.

The condition for subculturing  
within a few days.

【Technical support】 e-mail : [cellqa.brc@riken.jp](mailto:cellqa.brc@riken.jp)