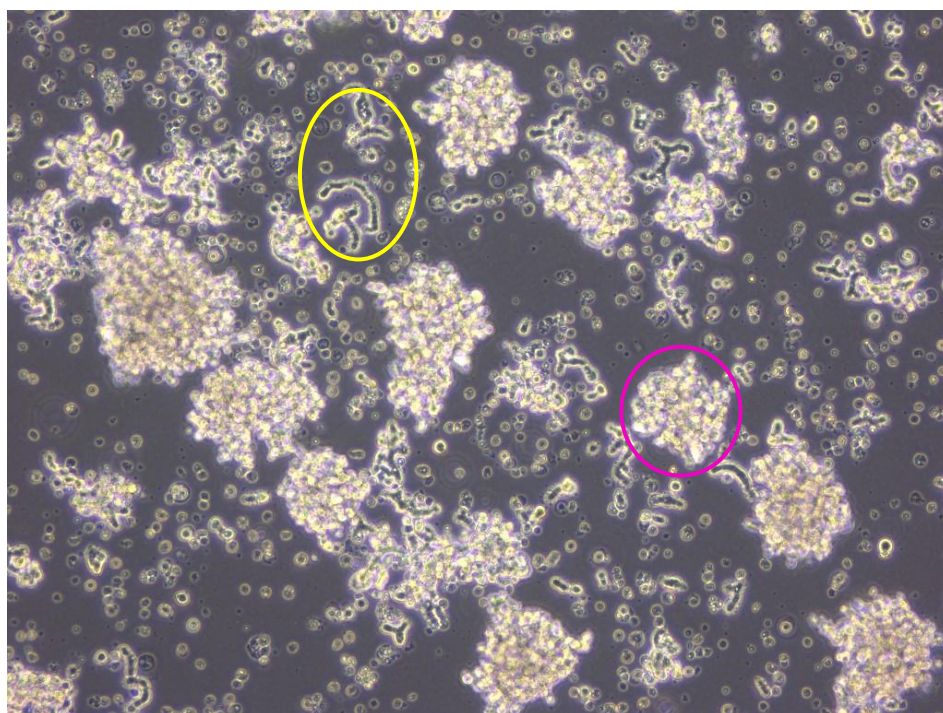


## Application consideration

### RCB1966 : S1

Please keep in mind following points:

- **This cell line grows as a combination of adherent and floating cells.**
- **Many adherent cells are present right after thawing, and they start to float as they grow.**
- **Adherent cells can be also easily detached from dishes by pipping up and down.**



Yellow: Adherent cells

Pink: Floating cells

【Technical support】 e-mail : [cellqa.brc@riken.jp](mailto:cellqa.brc@riken.jp)