

## **Application consideration**

Please keep the following points in mind:

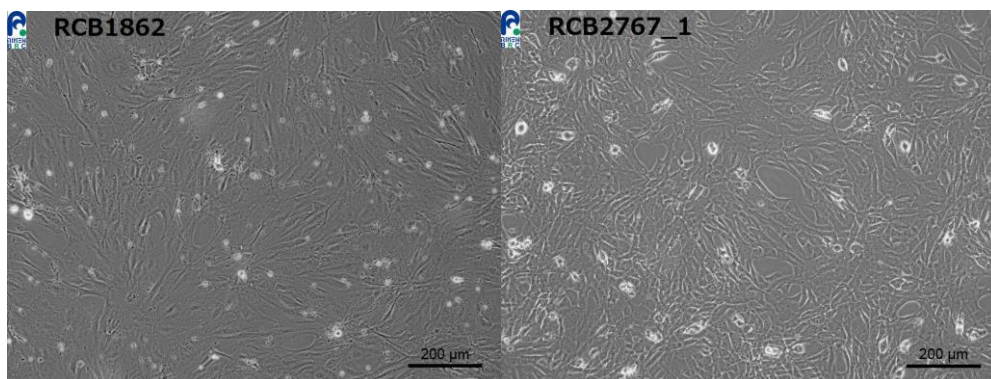
### **RCB1862 : NIH3T3-3-4**

### **RCB2767 : NIH/3T3**

Use Calf Serum (CS) for culturing these cell lines.

When passaging the cells, plate  $3 \times 10^5$  cells per 60 mm dish.

The cells are prone to be affected by trypsin treatment and lots of CS. Thus, please be careful for the duration of trypsin treatment, it affects cell adhesion on the next day.



【Technical support】 e-mail : [cellqa.brc@riken.jp](mailto:cellqa.brc@riken.jp)