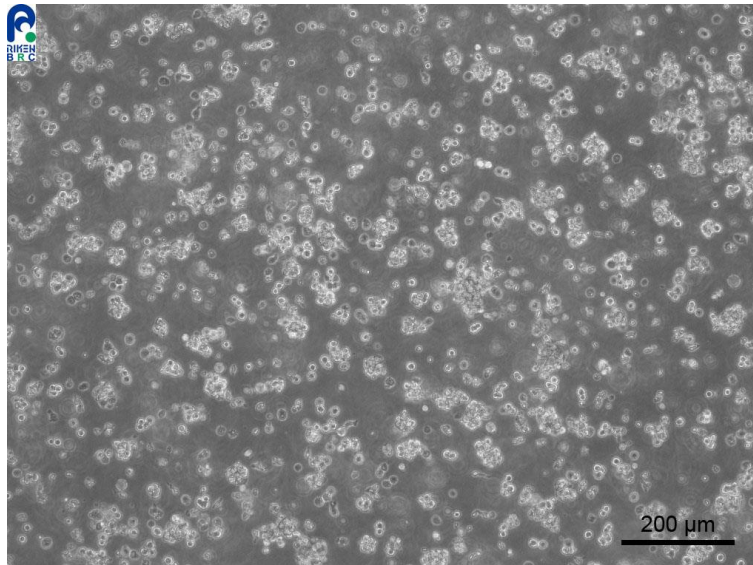


## Application consideration

### RCB1705 : JHCA-ov

Please keep in mind following points:

- **Needs over 1 day to stabilize adhesion**
- **Grow slowly**
- **Don't change medium on the next day of thawing, observe cultured cells for 1 week after thawing.**



【Technical support】 e-mail : [cellqa.brc@riken.jp](mailto:cellqa.brc@riken.jp)