

Application consideration

RCB1495 : FU-RPNT-1

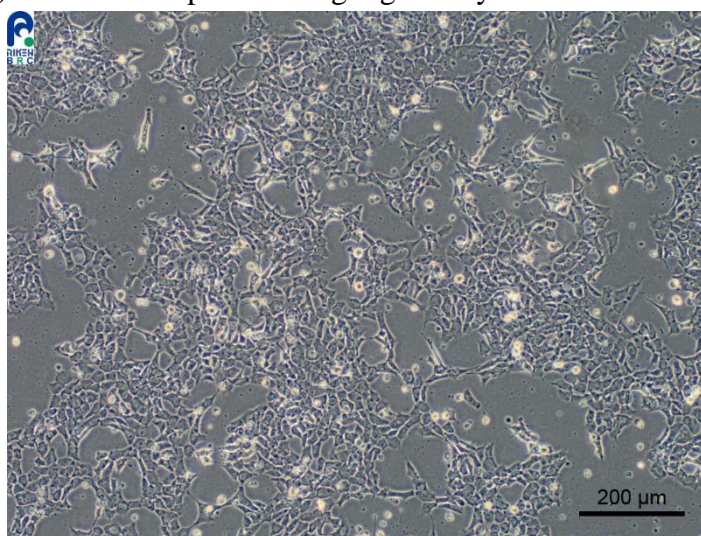
Please keep the following points in mind :

- Proliferation of cells is prone to be affected by quality of serum (FBS), and thus you may need to select a suitable FBS in advance.
- When you observe dead cells before the cells reach 100% confluent such as like Photo 2, please perform medium change alone without passage.

It is better to keep observing them until they start to proliferate, and then please passage them.

- Please restart culture at a high cell density after passages until they start to proliferate vigorously.

(1) The cells are proliferating vigorously without dead cells.



(2) Dead cells are observed, although they are not 100% confluent yet.
(Please do not passage the cells at this point.)

