

## **Application consideration**

### **RCB1477 : CHO-RD**

Please keep the following points in mind :

Cells are grown in serum-free media.

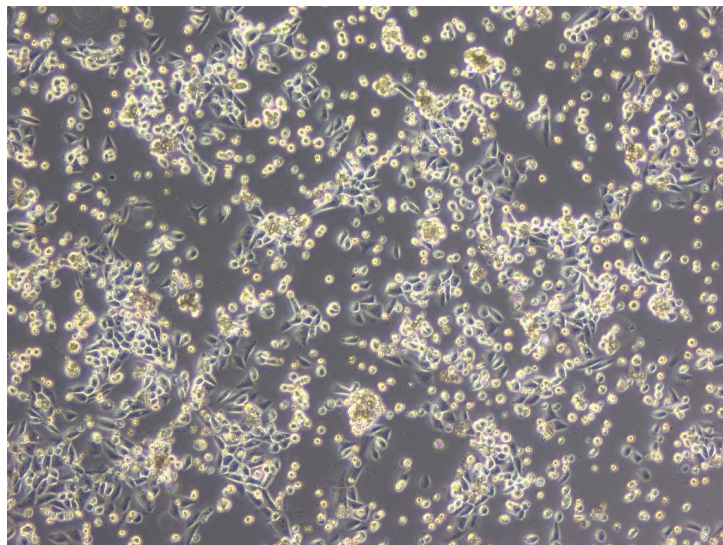
High rate of dead cells as a result of thawing

Keep observing cells for several days without medium change after thawing.

Cells are growing slowly.

Adherent cells will appear during cell culture (see the photo below).

Detach adherent cells by pipetting up and down gently when subculturing cells.



【Technical support】 e-mail : [cellqa.brc@riken.jp](mailto:cellqa.brc@riken.jp)