

## **Application consideration**

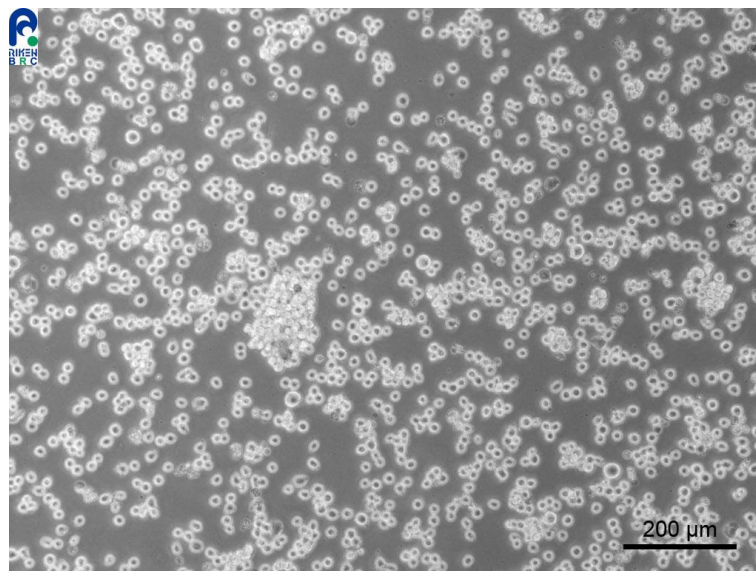
### **RCB1189 : THP-1**

Please keep in mind the following points :

Please observe cells carefully until they start to proliferate.  
Cells tend to start proliferating better if cells are kept in high cell density during culture right after thawing.

In the case that you count cells right after thawing,  
please plate cells around  $3 \times 10^5$  cells / mL.

Please do not change medium on the next day of thawing and  
keep observing cells for 1 week without medium change.



【Technical support】 e-mail : [cellqa.brc@riken.jp](mailto:cellqa.brc@riken.jp)