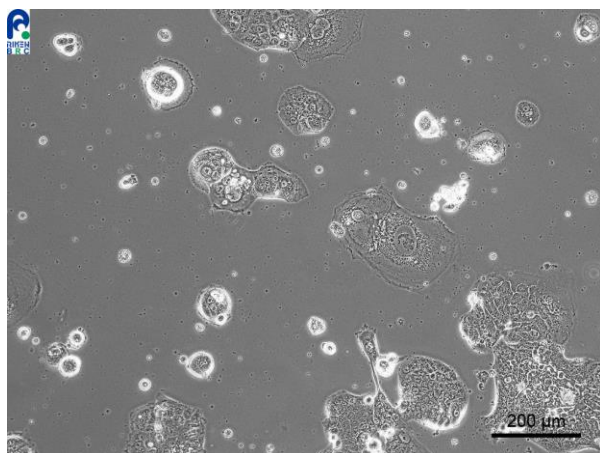


## Application consideration

### RCB1185 : TT1TKB

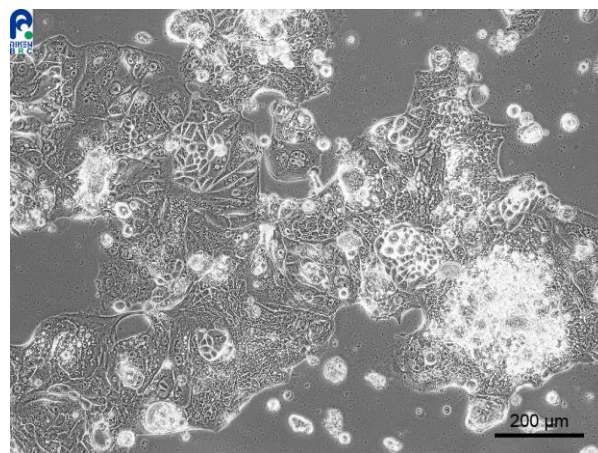
Please keep the following points in mind:

- Needs over 1 day to stabilize adhesion.
- Grow slowly.
- Don't change medium on the next day of thawing.  
Keep observing cells for 1 week without medium change.



**The condition just after plating**

(Please wait for cell proliferation by changing the medium.)



**The condition of cell proliferation**

(Please do not subculture cells at this point.)

【Technical support】 e-mail : [cellqa.brc@riken.jp](mailto:cellqa.brc@riken.jp)