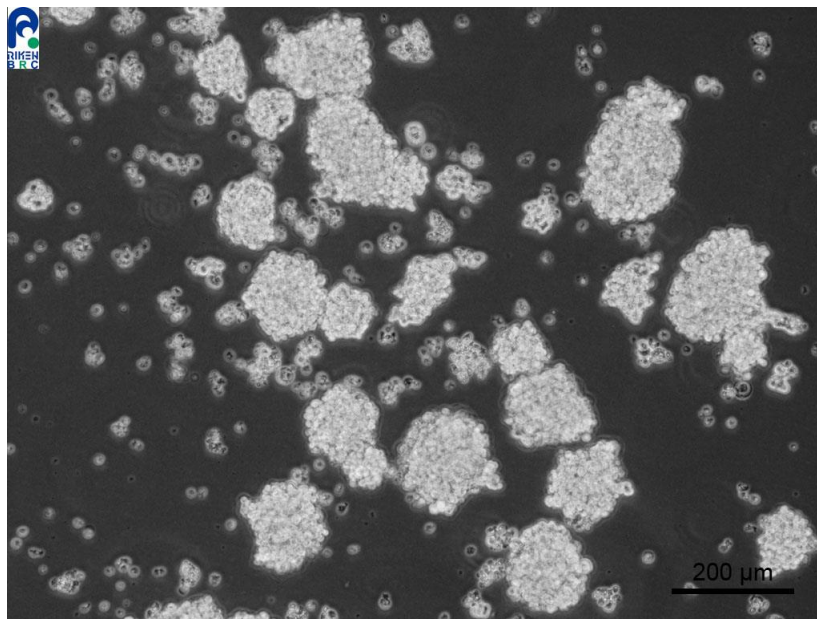


## Application consideration

### RCB1184 : Lu-165

Please keep in mind following points :

- **High rate of dead cells as a result of thawing.**
- **Grow slowly.**
- **Don't change medium on the next day of thawing.  
Keep observing cells for 1 week without medium change.**
- **When cells grow poorly after thawing, please passage cells by dilution  
without centrifugation.**
- **When cells become large aggregates,  
please disrupt them to small clusters by pipetting up and down.**



【Technical support】 e-mail : [cellqa.brc@riken.jp](mailto:cellqa.brc@riken.jp)