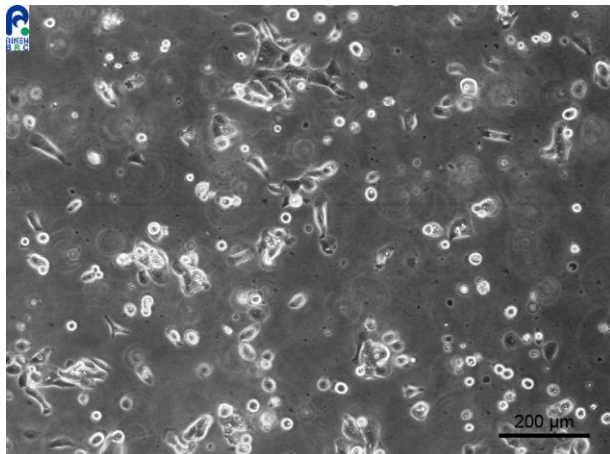


## Application consideration

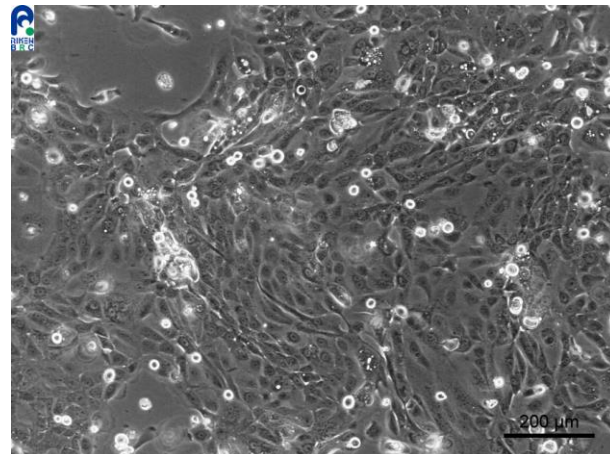
### RCB1169 : TGBC18TKB

Please keep the following points in mind :

- Needs over 1 day to stabilize adhesion.
- Grow slowly.
- Don't change medium on the next day of thawing,  
and keep observing cells for 1 week without medium change.



**The condition of cells not attached to culture vessel**



**The condition of cell proliferation**  
(Required cell density for subculturing.)