

Application consideration

Please keep the following points in mind:

RCB1153 : S2 (Drosophila)

- The incubation temperature is **25°C**, and the CO₂ concentration is **0%**.

Please use an incubator able to keep **25°C**.

Please use flask possessing plug seal cap.

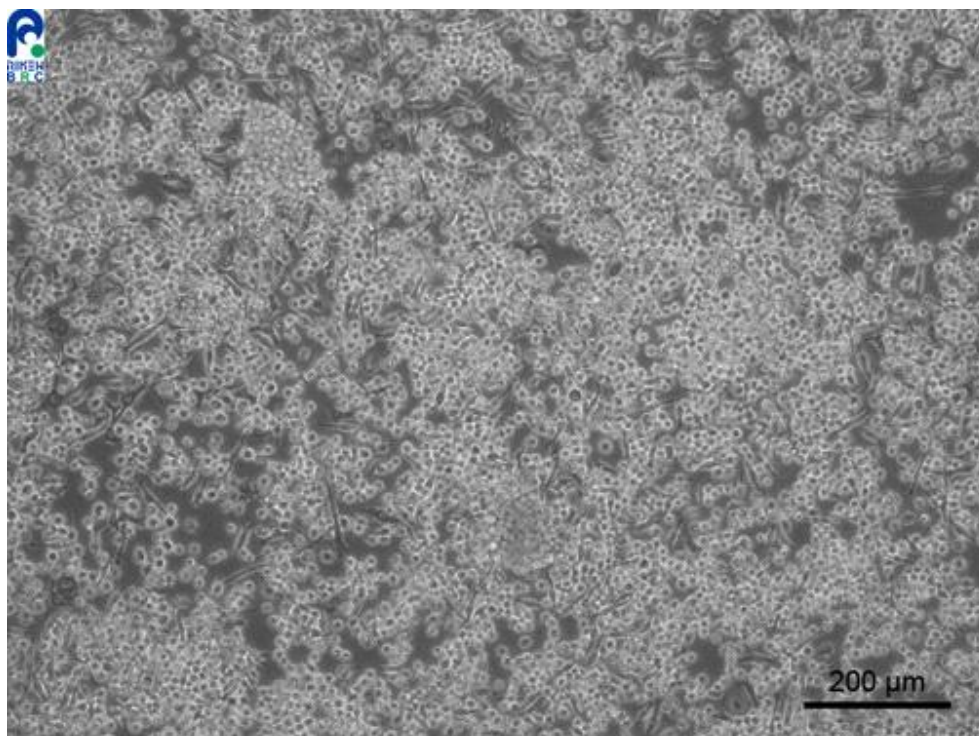
- Please use the culture medium below.

Schneider's + 10% FBS (heat inactivated) + 10 ug/mL Insulin

- This cell line grows as a combination of adherent cells and floating cells.

When passaging cells, please detach adherent cells from culture flask by pipetting with fine-tipped pipette and collect all floating cells and adherent cells.

Then, plate to new flask after mixing floating cells and adherent cells.



【Technical support】 e-mail : cellqa.brc@riken.jp