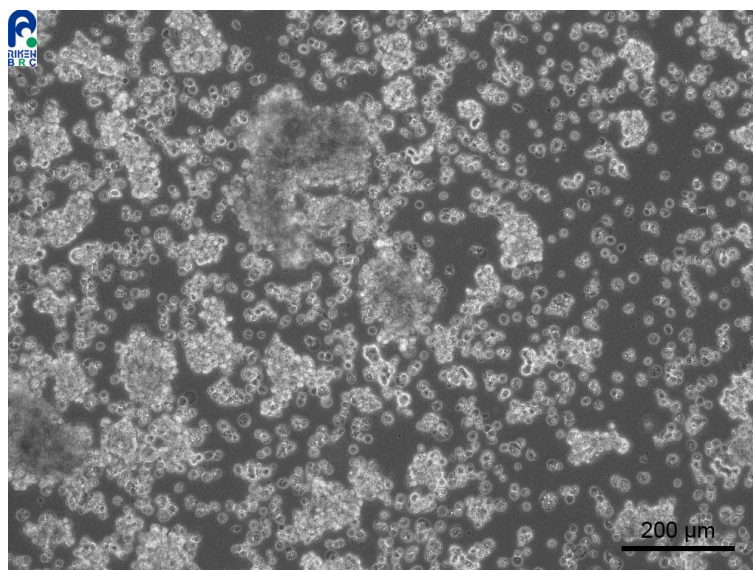


## Application consideration

### RCB1148 : TGBC11TKB

Please keep the following points in mind :

- Needs over 1 day to stabilize adhesion.
- Grow slowly.
- Don't change medium on the next day of thawing,  
and keep observing cells for 1 week without medium change.



The cells loosely attached to culture vessel up to 1 week after thawing and cell proliferation occurs as floating aggregates. After 1 week, the round aggregates weakly attach to culture vessel. Cell detachment by pipetting is sufficient for subculturing and trypsin treatment is not required.

【Technical support】 e-mail : [cellqa.brc@riken.jp](mailto:cellqa.brc@riken.jp)