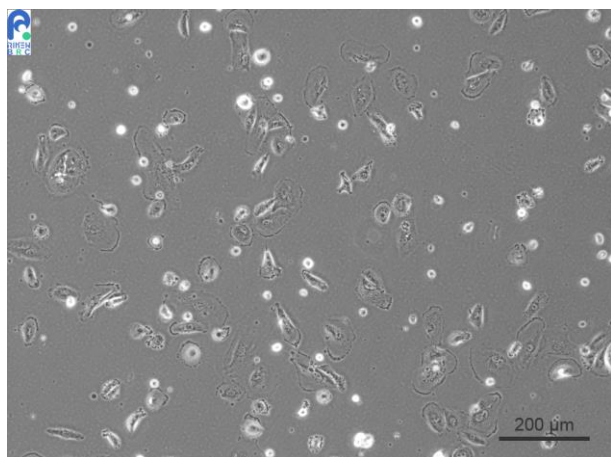


## **Application consideration**

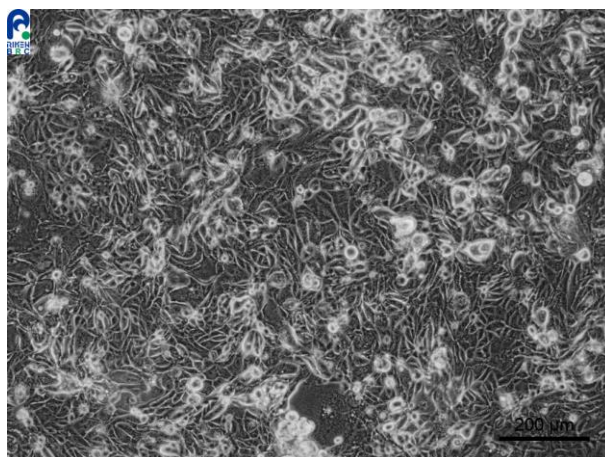
Please keep the following points in mind:

### **RCB1130 : TGBC2TKB (Lot.4)**

- Seed all cells to “**one** T-25 flask” or “**one** 60 mm culture dish” at the start of cultivation (for resuscitation).
- Needs over 1 day to stabilize adhesion.
- Grow slowly.
- Don't change medium on the next day of resuscitation, and keep observing cells for 1 week without medium change.



**The condition just after plating**  
(Please wait for cell proliferation by changing the medium.)



**At the cell density like above, cell passage is necessary.**

【Technical support】 e-mail : [cellqa.brc@riken.jp](mailto:cellqa.brc@riken.jp)