

Application consideration

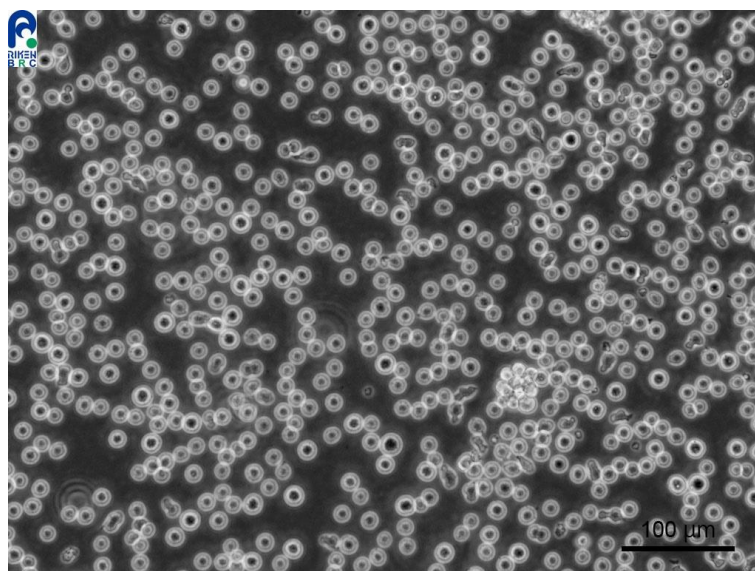
RCB0805 : Ba/F3

Please keep in mind following points:

This cell line needs to be added a Conditioned Medium for culturing.

<A Method of preparing WEHI-3 (RCB0035) Conditioned Medium>

1. Start cultivating WEHI-3 cells at 37 degrees Celsius and cultivate cells for 3 to 5 days after subculturing.
2. Collect all cell supernatant when cells reach almost confluence.
3. Centrifuge cell supernatant and remove dead cells and cellular debris.
(Skip this step if there are few floating debris.)
4. Pass cell supernatant through 0.22 μ m syringe filter (by using low binding type).
-If the syringe filter clogs, use 0.45 to 1.0 μ m filter prior to 0.22 μ m filter.
5. Store it at 4 degrees Celsius. For long term storage (more than a month), keep it in -20 degrees Celsius.
NOTE: Culture filtrate (Conditioned Medium) should be stored in small aliquots to avoid repeated freeze-thaw cycles.



【Technical support】 e-mail : cellqa.brc@riken.jp