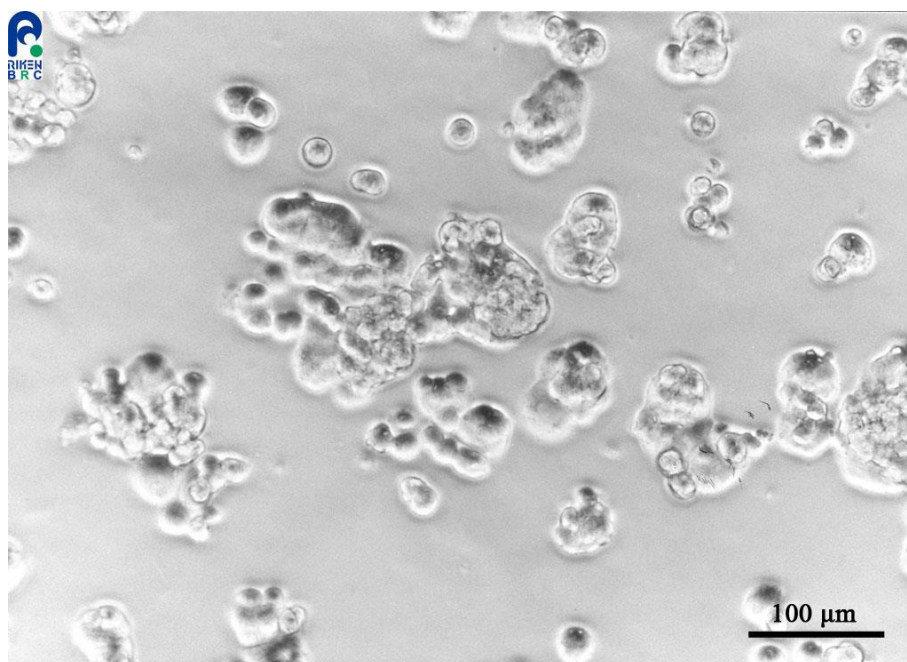


## Application consideration

### RCB0530 MtT/SM

Please keep the following points in mind:

- **This cell line weakly adheres as floating round or ovoid clusters.**
- **Please keep observing the cells without changing the medium until the cell adhesion is stabilized.**
- **This cell line grows slowly.**



【Technical support】 e-mail : [cellqa.brc@riken.jp](mailto:cellqa.brc@riken.jp)