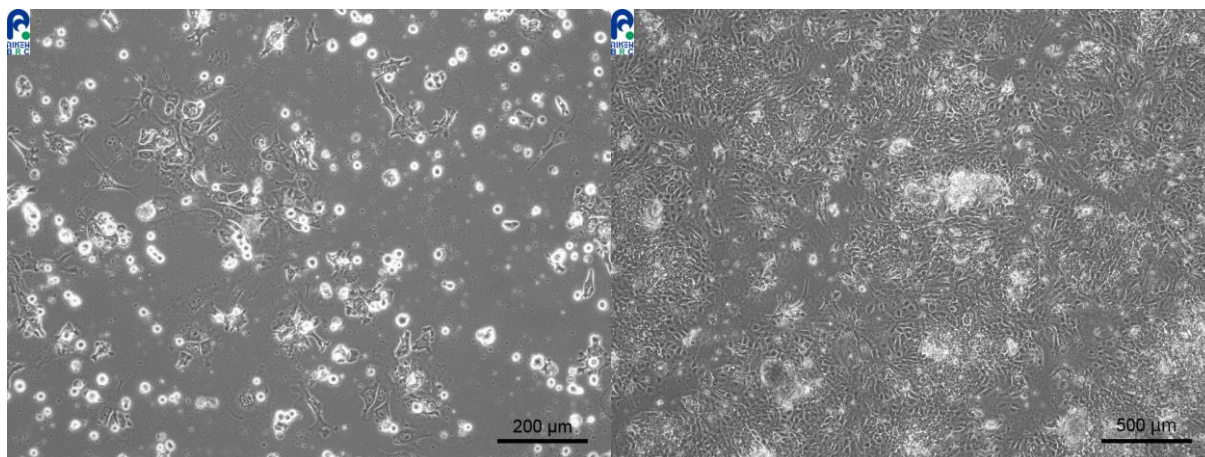


Application consideration

RCB0494 : NEC15

Please keep the following points in mind :

- Needs over 1 day to stabilize adhesion.
- Don't change medium on the next day of thawing.
Keep observing cells for 1 week without medium change.



3 days after thawing and subculturing

Optimal cell density for subculturing

【Technical support】 e-mail : cellqa.brc@riken.jp