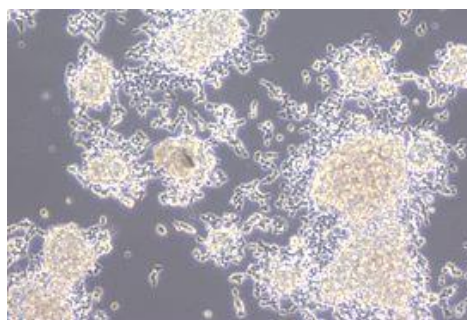
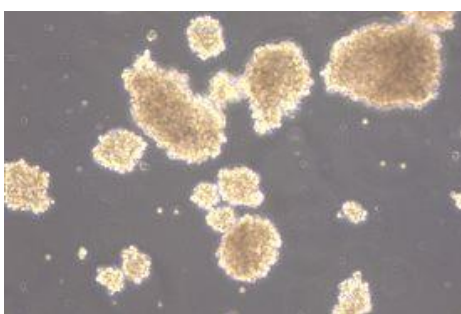
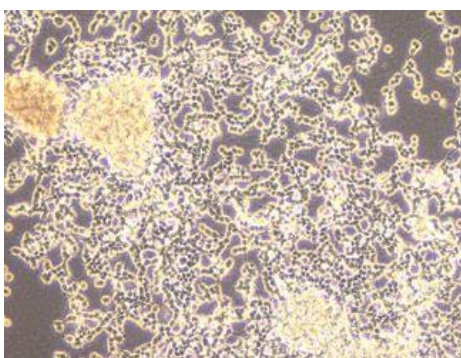


## **Application consideration**

### **RCB 0482 MC-NB-1**

Please keep the following points in mind :

This cell line grows as a combination of adherent and floating cells  
(The condition may change depending on the lot of FBS used in the medium  
and the cell culture periods)



【Technical support】 e-mail : [cellqa.brc@riken.jp](mailto:cellqa.brc@riken.jp)