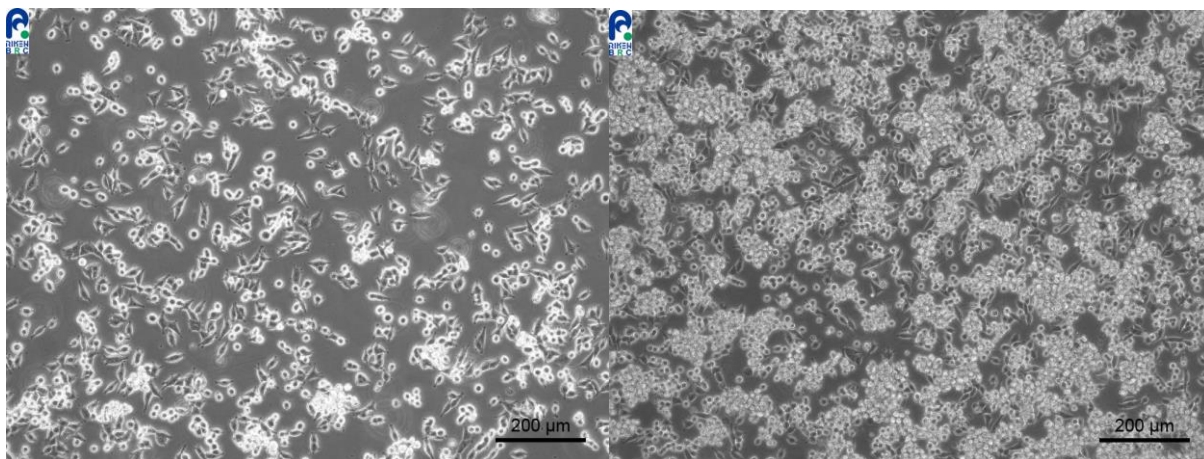


Application consideration

RCB0477 : NB9

Please keep the following points in mind :

- This cell line grows as a combination of adherent and floating cells.
- Don't change medium on the next day of thawing.
Keep observing cells for 1 week without medium change.



The cells attached to the culture vessel and are shown proliferating.

The condition for subculturing at optimal cell density.

【Technical support】 e-mail : cellqa.brc@riken.jp