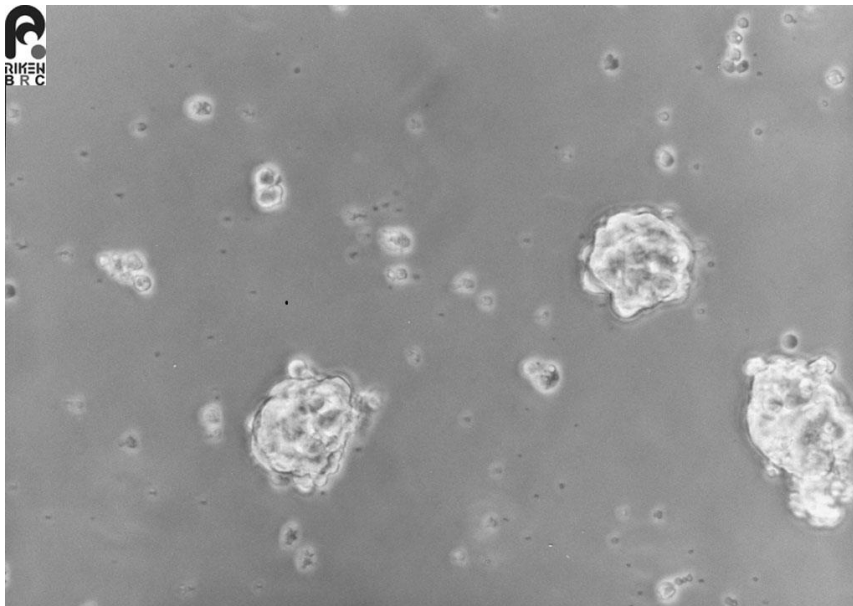


Application consideration

RCB0470 : Lu-140

Please keep in mind following points :

- **High rate of dead cells as a result of thawing.**
- **Grow slowly.**
- **Don't change medium on the next day of thawing.
Keep observing cells for 1 week without medium change.**
- **When cells grow poorly after thawing, please passage cells by dilution
without centrifugation.**



【Technical support】 e-mail : cellqa.brc@riken.jp