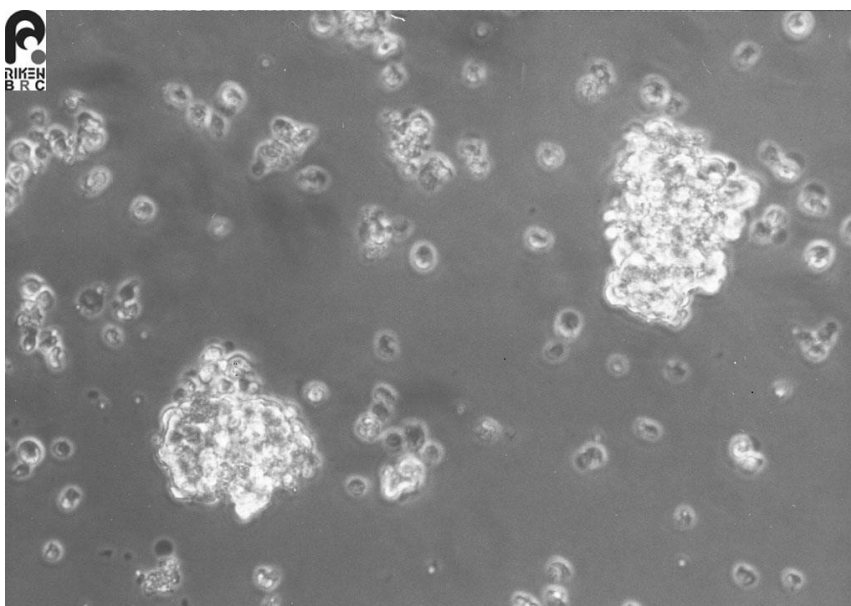


Application consideration

RCB0467 : Lu-134-B

Please keep in mind following points :

- **High rate of dead cells as a result of thawing.**
- **Grow slowly.**
- **Don't change medium on the next day of thawing.
Keep observing cells for 1 week without medium change.**
- **When cells grow poorly after thawing, please passage cells by dilution without centrifugation.**
- **Cells are still adhered to the culture vessels when passaging them,
please detach cells by pipping up and down.**



【Technical support】 e-mail : cellqa.brc@riken.jp