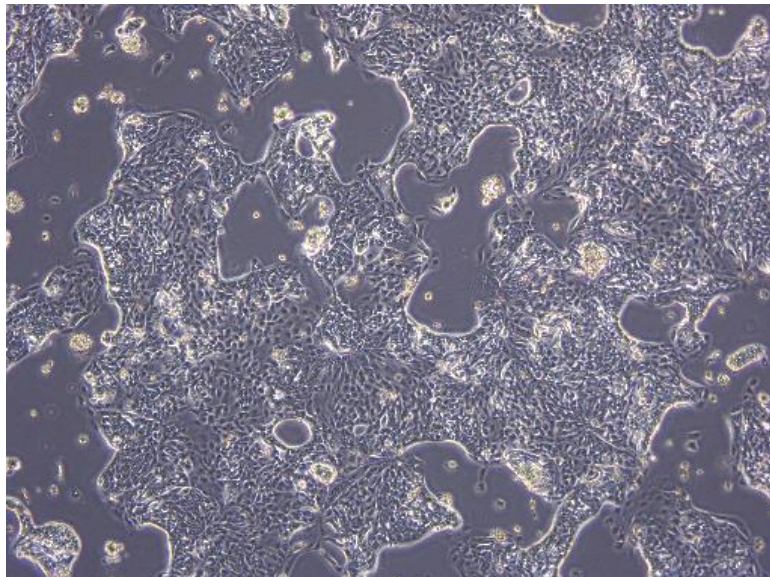


Application consideration

RCB0440 : LC-2/ad

Please keep in mind following points:

- Needs over 1 day to stabilize adhesion.
- The cells do not reach confluence.
Please subculture cells when they reach 60 to 70% of surface of culture dishes or flasks (see photo below).



【Technical support】 e-mail : cellqa.brc@riken.jp