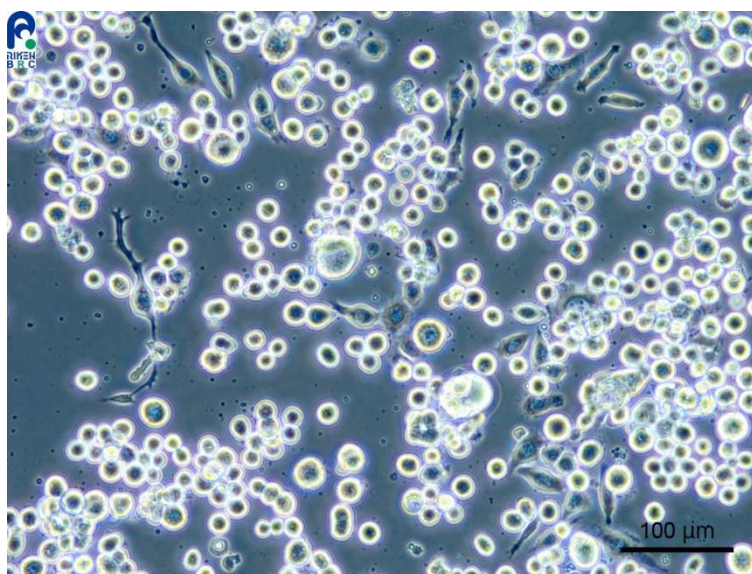
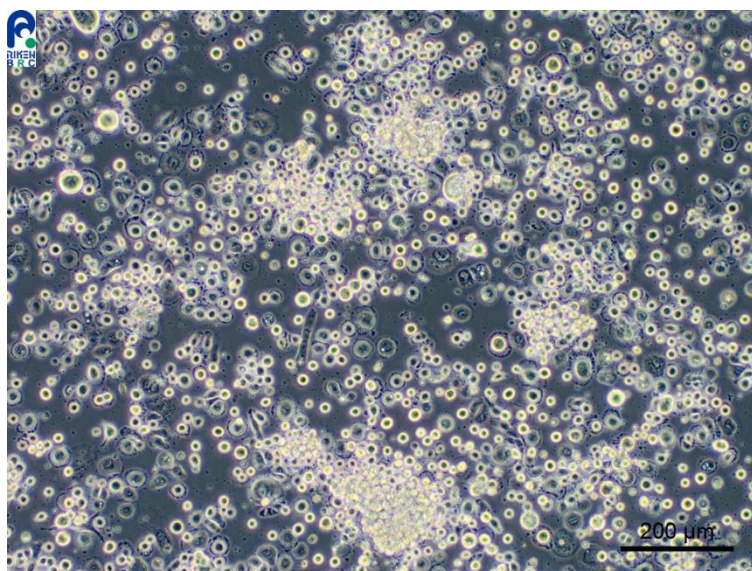


Application consideration

RCB0413 : NIAS-MB-32

Please keep the following points in mind :

- In some cases, cells are growing slowly. Therefore, please do not change medium on the next day of thawing and keep observing cells for one week without medium change.
- Cells grow in adherent culture, however, floating cells also start to present as they grow.
(See the photos below)
- When passaging cells, please detach them from culture vessels by pipetting and collect all floating and adherent cells. Then, plate cells to new culture vessels with split ratios from 1:2 to 1:3 by mixing floating with adherent cells.



【Technical support】 e-mail : cellqa.brc@riken.jp