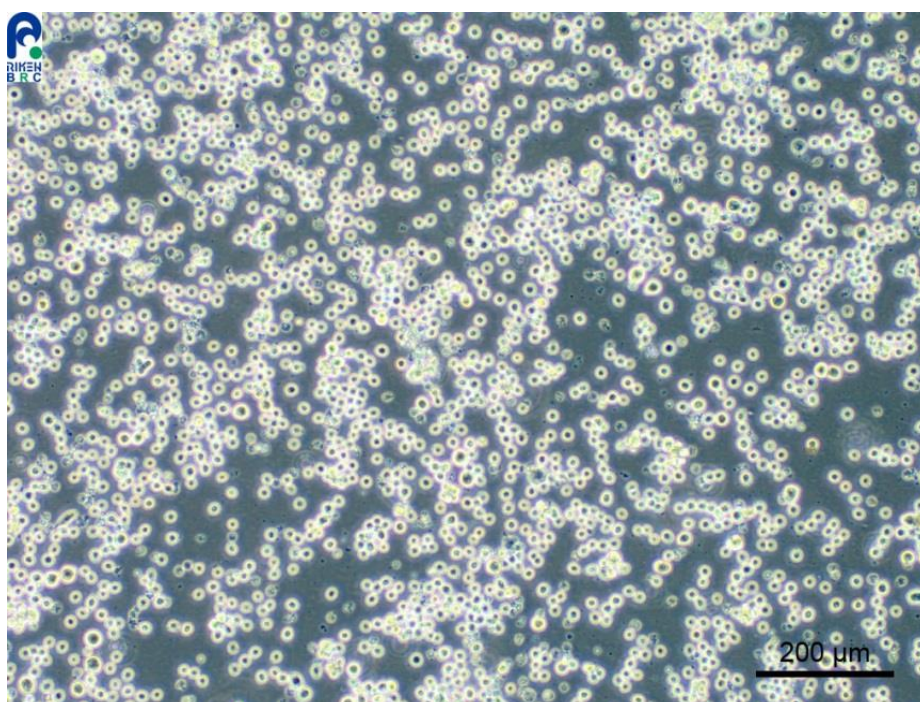


Application consideration

RCB0213 : NS0

Please keep the following points in mind:

- We recommend using the petri dish for culturing this cell line.
- This cell line is floating cells, however, it grows as a combination of adherent and floating cells.
- If you use a cell-culture treated dish, the cells sometimes become difficult to detach from the surface by pipetting up and down.
However, if you use the petri dish, even though the cells are attached to the surface, it is easy to detach cells by pipetting up and down.



(Culture of the cell line using a petri dish)