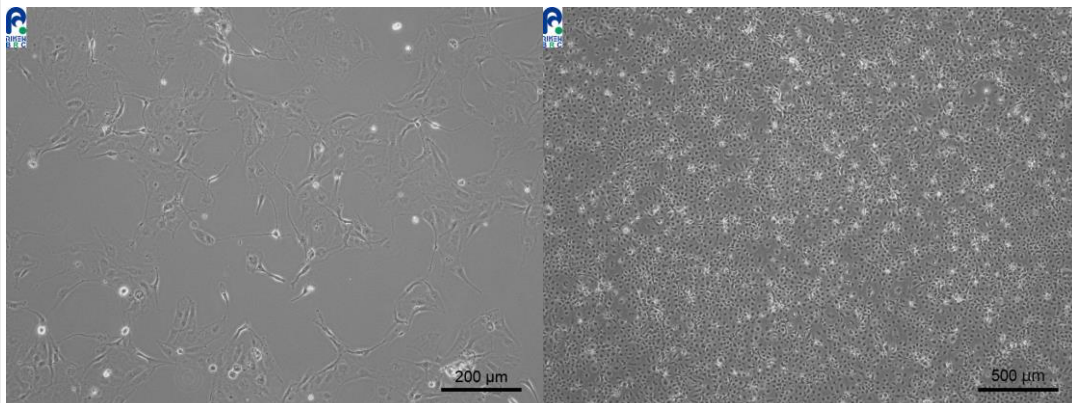


Application consideration

RCB0187 : OLHE-131

Please keep in mind the following points:

1. This cell line grows slowly.
2. Please do not plate the cells at a low density.
3. Please thaw the cells quickly at 37°C,
however note the incubation temperature is 25°C.
4. Please use a flask possessing a cap without a filter and
tightly screw a cap during culture.



【Technical support】 e-mail : cellqa.brc@riken.jp