

Application consideration

HPS0117 CiRA086Ai-m1

Please keep in mind following points:

- This cell line grows slowly.
- Please subculture the cells when the colonies are of high enough density (see photo 1).
- Please be careful not to break up the colonies into small clusters, otherwise, these cells grow poorly (see photo 3 for optimal size).

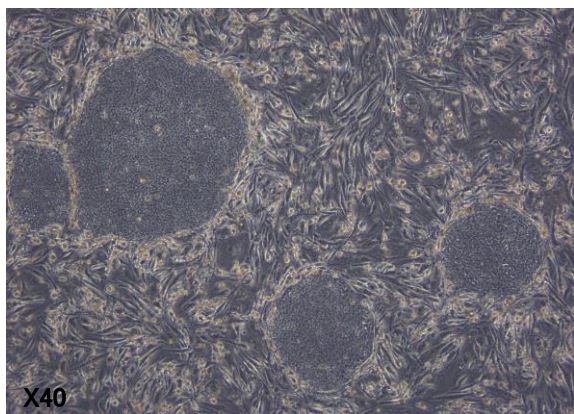


Photo 1: Optimal condition of colonies for subculture.

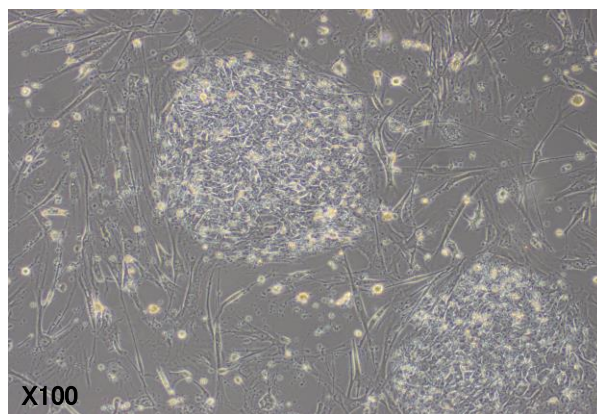


Photo 2: Unsuitable condition for subculture due to low cell densities inside colonies.

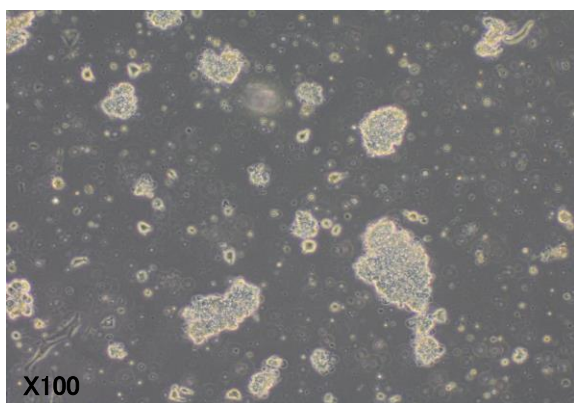


Photo 3: Optimal size of colonies for subculture.

【Technical support】 e-mail : cellqa.brc@riken.jp