

Application consideration

HPS0077 454E2

Please keep the following points in mind:

- **This iPS cell line tends to differentiate from the central portion as they become larger colonies than compared to many other human iPS cell lines.**
- **10-20% of the total colonies may have the tendency to differentiate.**
- **Subculture cells often before the differentiated colonies start to present.**

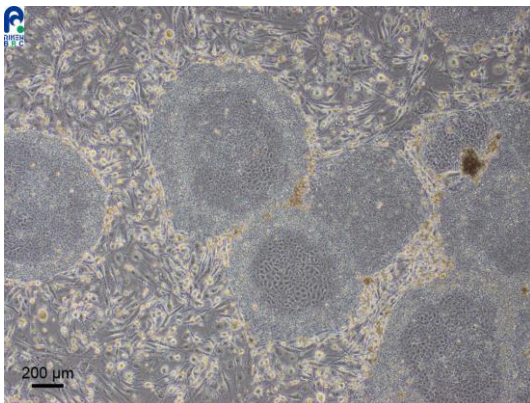


Photo No.1

Photo No.1
Both undifferentiated and differentiated colonies are shown.

Photo No.2
The condition of a differentiated colony from the central portion.

Photo No.3
The condition at which the colony is at optimal size for subculturing.

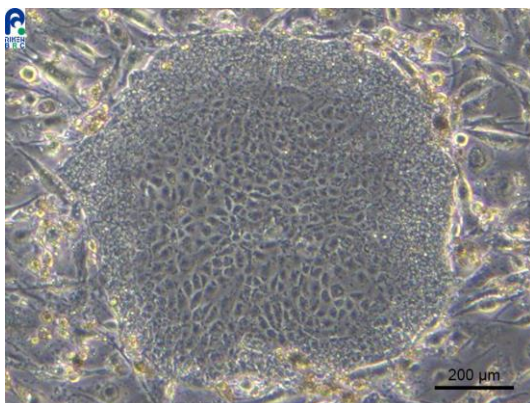


Photo No.2

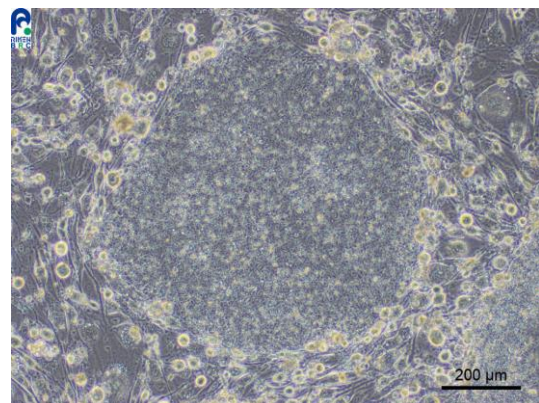


Photo No.3

【Technical support】 e-mail : cellqa.brc@riken.jp

