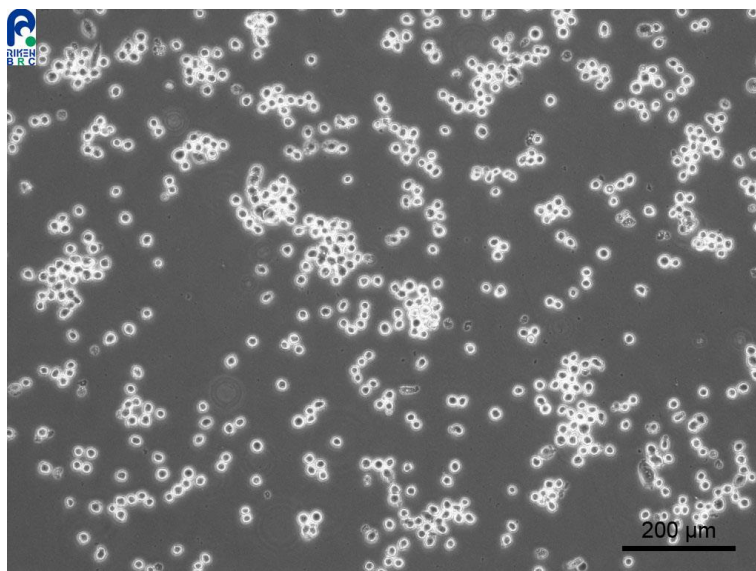


Application consideration

RCB4488 : AFL4

Please keep the following points in mind :

- **This cell line takes time to start growing.
Therefore, please just observe the cells for a week and add growth media only without subculture.**
- **Once the cells start to grow,
they have a greater tendency for an overgrowth.**



【Technical support】 e-mail : cellqa.brc@riken.jp