

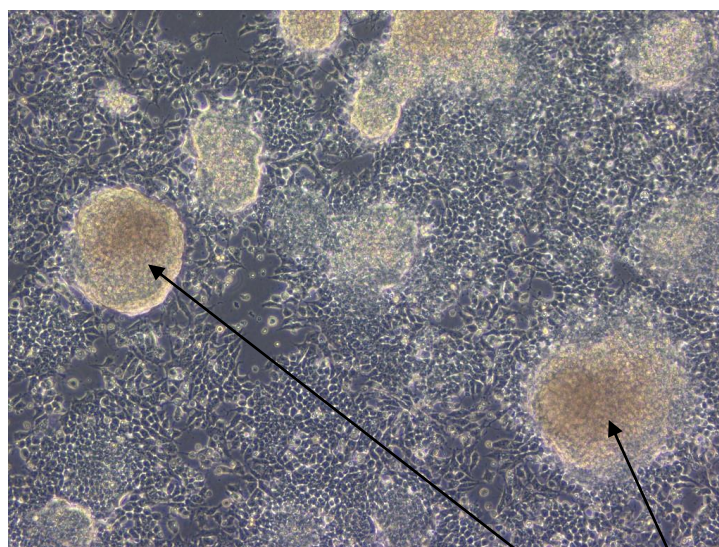
Application consideration

RCB2643 : F9

Please keep the following points in mind :

The overgrowth tends to occur in central areas of cell clumps, and if that occurs, cells start to detach from dishes.

Subculture cells when they grow in a polylayer manner even before reaching to confluence.



Proliferated regions in polylayers

【Technical support】 e-mail : cellqa.brc@riken.jp