

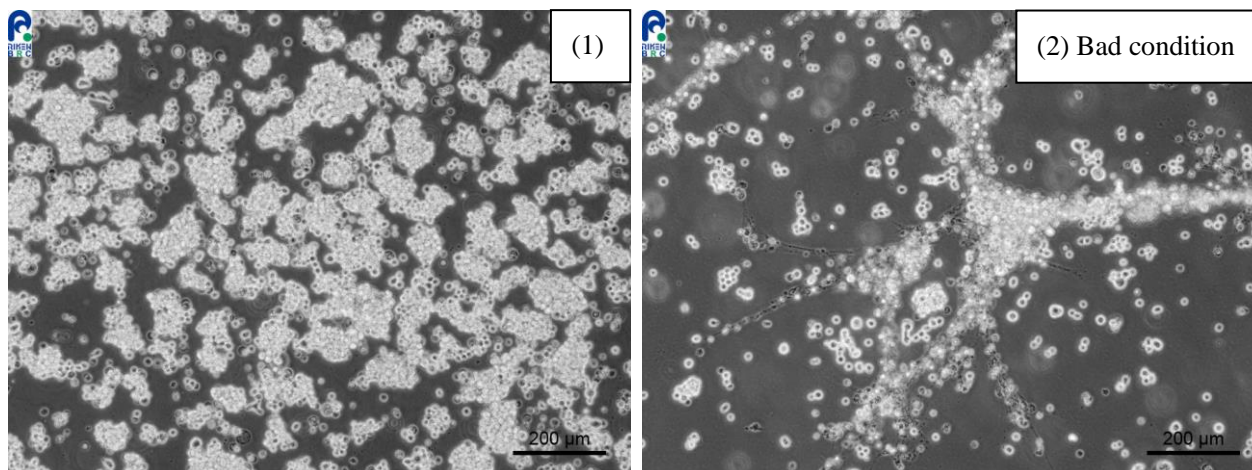
Application consideration

RCB2351 OGU1

Please keep the following points in mind:

1. Incompatible serum (FBS) may result in poor cell growth.
2. If the cells become like shown in photo 2,
please contact us by using the email address below.

Please refer to the photos below (x100)



(1) Thawed cells : The cells appear aggregated and start to proliferate under this condition.

(2) The next day after thawing : Many dead cells are present by the influence of incompatible serum.

【Technical support】 e-mail : cellqa.brc@riken.jp