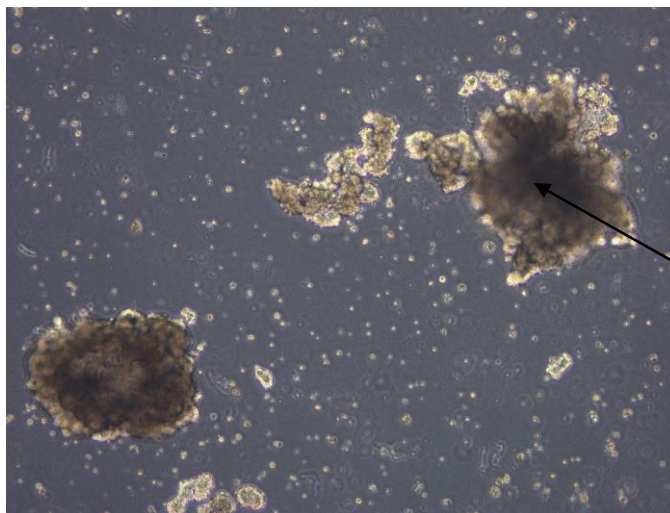


Application consideration

RCB2343 : NCR-G3

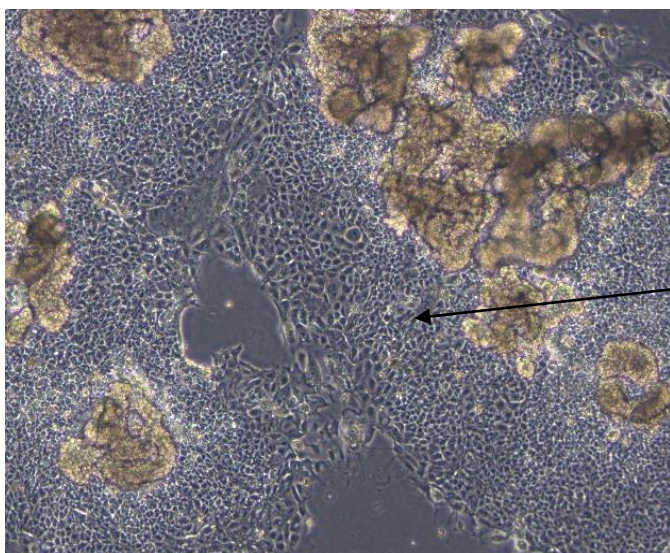
Please keep the following points in mind

This cell line takes time to attach to dishes; therefore, please keep it undisturbed for at least one week right after cells are thawed.



Floating cell clusters
can be observed on
the day after thawing

**Cell clusters are floating right after plating ; however,
soon after attaching to dishes, cells spread peripherally as they grow.**



Proliferation of
adherent cells

**In the change of cell culture medium, it would be better to collect
all floating cells (not discarding them) and change only half of medium**

**When subculturing this cell line, please collect all floating cells in medium
and then plate cells by mixing floating cells with adherent cells.**