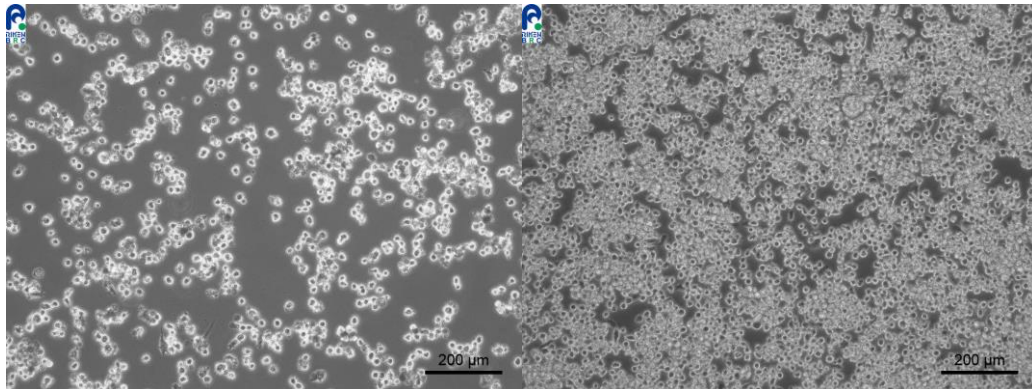


Application consideration

RCB2125 : BmN4-DR

Please keep the following points in mind:

- Please thaw the cells quickly at 37°C;
however, note the incubation temperature is 25°C.
- Please use a flask possessing a cap without a filter and
tightly screw the cap during culture.
- This cell line grows slowly.
- Please do not plate the cells at a low density.



The cells attached to the culture vessel
and are shown proliferating.

Required cell density for subculturing.

【Technical support】 e-mail : cellqa.brc@riken.jp