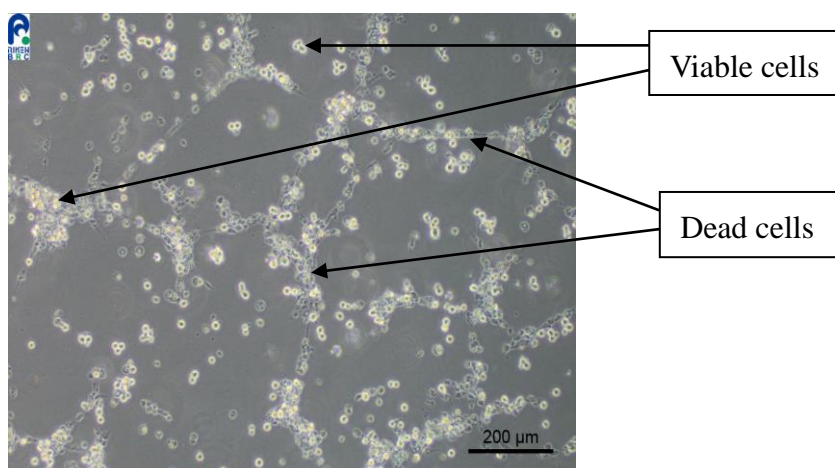


## Application consideration

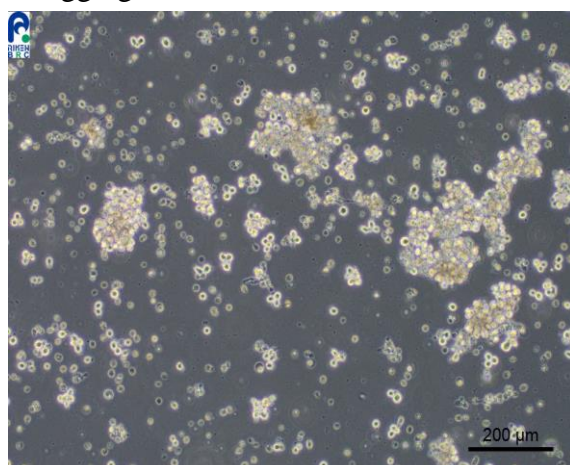
### RCB1871 : TL-1

Please keep in mind following points:

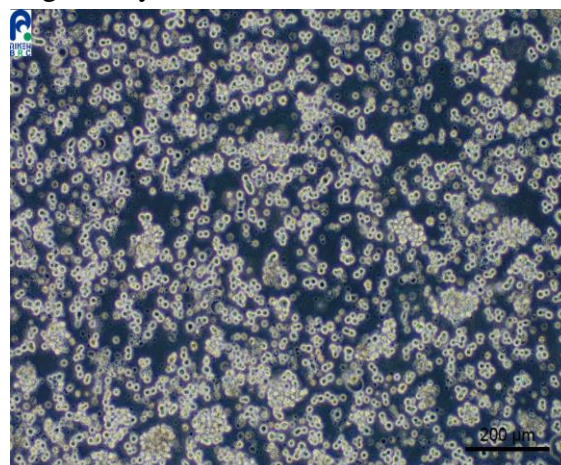
The next day after thawing (resuscitation), around 30 to 40% of cells are observed as dead cells in the culture.



On Day 2, the cells start to proliferate as aggregated forms.



On Day 4, the cells proliferate more vigorously.



As the photo shown above, many dead cells are observed at the next day of thawing (resuscitation).

On Day 2, viable cells start to proliferate as aggregated forms and the dead cells decrease. Therefore, please observe the cells for 3 to 4 days.

【Technical support】 [cellqa.brc@riken.jp](mailto:cellqa.brc@riken.jp)