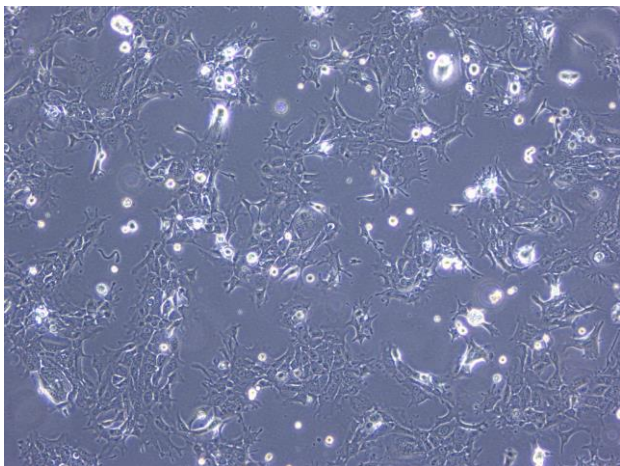


Application consideration

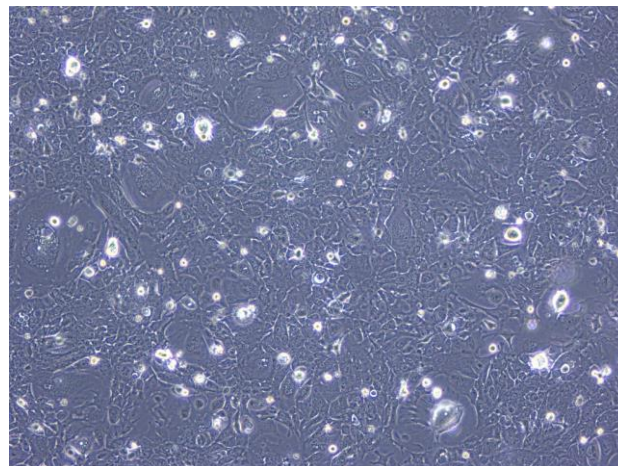
RCB1709 : GE1

Please keep in mind following points:

- Please culture the cells at **33 degrees C**.
- Cells are grown in low-serum medium (1% FBS) ; therefore, please remove the trypsin solution by centrifugation (1,000 rpm, 3 min, 2 or 3 times) when you subculture.
- Please be careful not to lower the cell density too much at the time of seeding.
(Seeding density: 4.0×10^5 cells/ 60mm dish)
- Please subculture the cells before they reach confluence.
(Preferably about 80%-100% confluence.)



Cell density is low.



Please subculture the cells under this condition.

【Technical support】e-mail: cellqa.brc@riken.jp