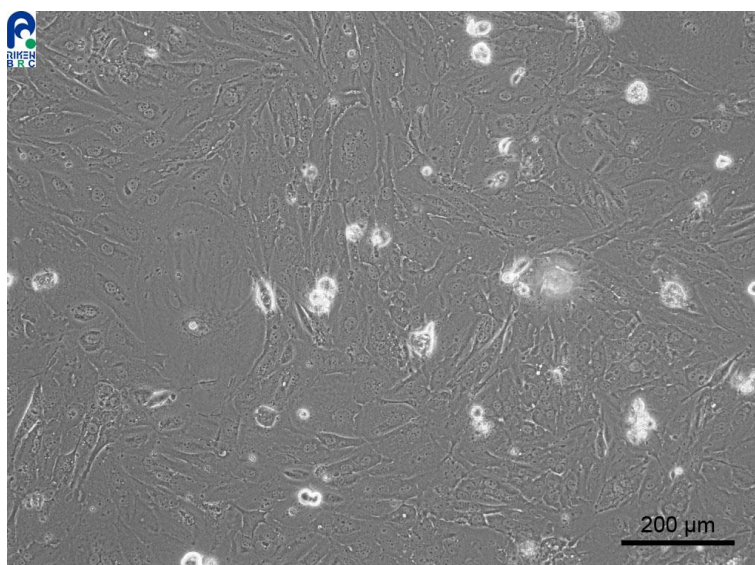


## **Application consideration**

### **RCB1676 : JHOM-1**

Please keep the following points in mind :

- Needs over 1 day to stabilize adhesion
- Grow slowly
- Don't change medium on the next day of thawing.  
Keep observing cells for 1 week without medium change



【Technical support】 e-mail : [cellqa.brc@riken.jp](mailto:cellqa.brc@riken.jp)