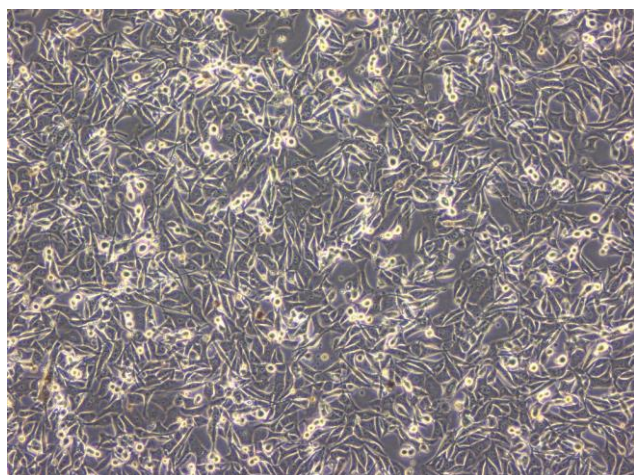


Application consideration

RCB 1283 : B16 melanoma

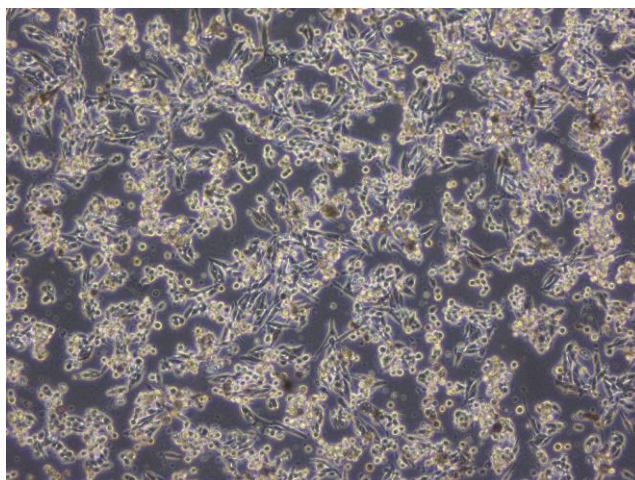
Please keep in mind the following points:

- **When the cells reach at high cell density, they start to detach from dishes or differentiate and produce melanin, then turn dark color.**
 - *The dark-colored cells start to detach from dishes, and the media gets dark color by melanin that the cells have produced.
- **Please keep observing cells and subculture before they reach at high cell density (preferably about 60 to 70% confluence).**



a. Good condition

Many attached cells are present and it is possible to subculture as usual.



b. Not good condition

Dark-colored and rounded cells are present. It is still possible to subculture if cells remain attached to dishes.

【Technical support】 e-mail : cellqa.brc@riken.jp