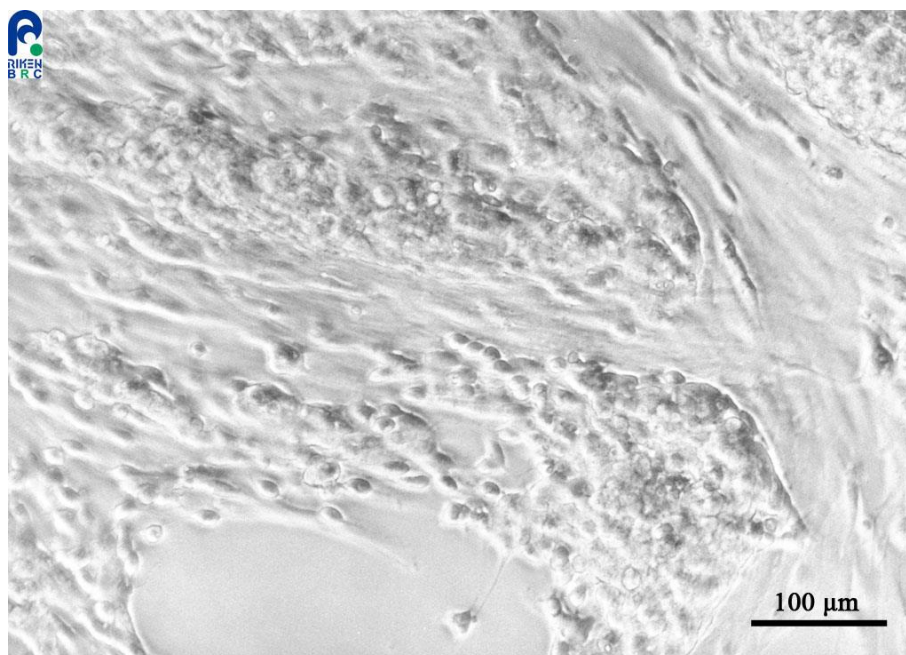


Application consideration

RCB1278 MtT/E

Please keep the following points in mind:

- **This cell line is spindle-shape in appearance and proliferates in this form of adherent cells and as round clusters.**
- **Please keep observing the cells without changing the medium until the cell adhesion is stabilized.**
- **This cell line grows slowly.**



【Technical support】 e-mail : cellqa.brc@riken.jp