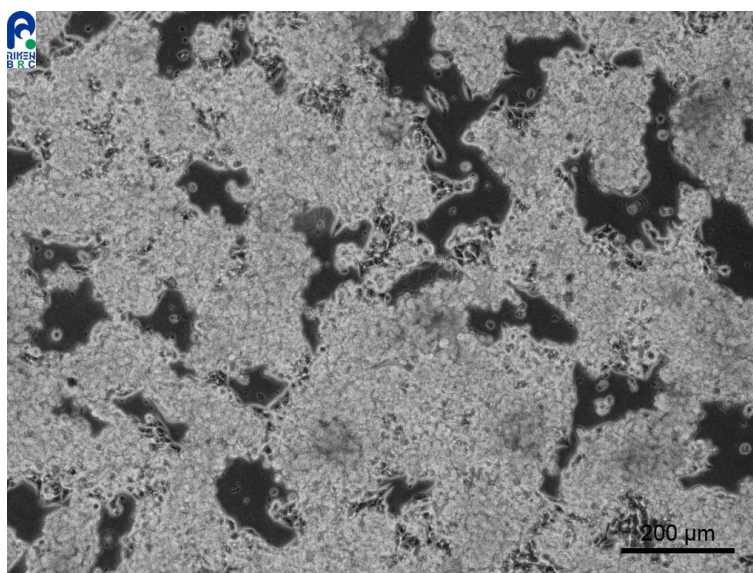


### Application consideration

## RCB1196 : TGBC24TKB

Please keep in mind following points:

- Needs over 1 day to stabilize adhesion
- Grow slowly
- Don't change medium on the next day of thawing,  
observe cultured cells for 1 week after thawing.



【Technical support】 e-mail : [cellqa.brc@riken.jp](mailto:cellqa.brc@riken.jp)