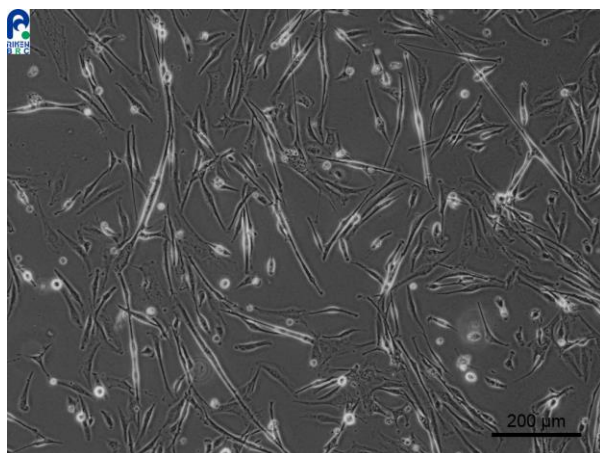


Application consideration

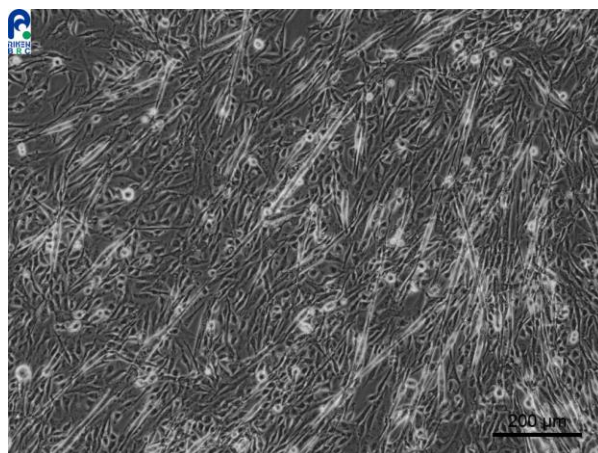
RCB1188 : NRS-1

Please keep the following points in mind:

- **Grow slowly.**
- **Don't change medium on the next day of thawing.**
Keep observing cells for 1 week without medium change.



The cells attached to the culture vessel and are shown proliferating.



The condition for subculturing at optimal cell density.

【Technical support】 e-mail : cellqa.brc@riken.jp