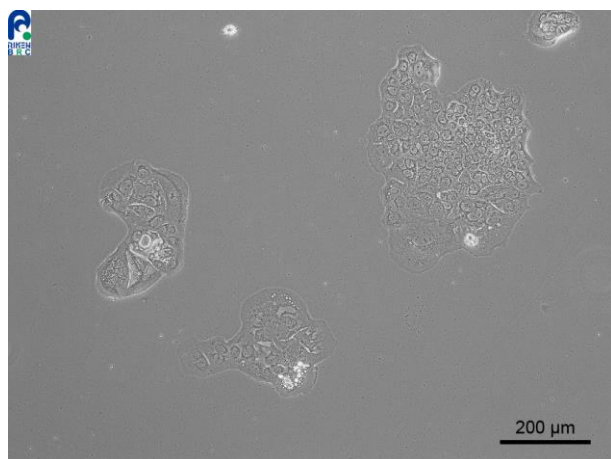


Application consideration

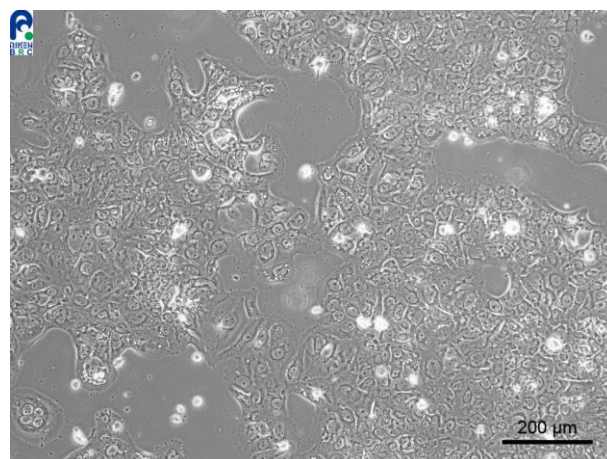
RCB1186 : TGBC14TKB

Please keep the following points in mind :

- Needs over 1 day to stabilize adhesion.
- Grow slowly.
- Don't change medium on the next day of thawing,
and keep observing cells for 1 week without medium change.



The condition just after plating
(Please wait for cell proliferation by
changing the medium.)



The condition of cell proliferation
(Please do not subculture cells at this
point.)

【Technical support】 e-mail : cellqa.brc@riken.jp