

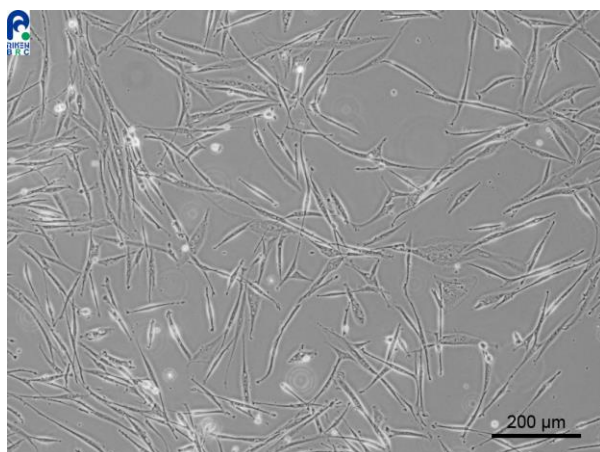
Application consideration

RCB1155 : Hepa-E1

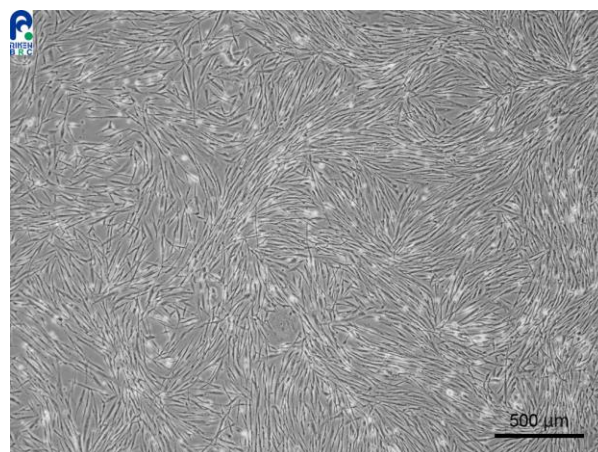
Please keep the following points in mind:

Don't change medium on the next day of thawing.

Keep observing cells for 1 week without medium change.



The cells attached to the culture vessel and are shown proliferating.



The condition of cell proliferation
(Required cell density for subculturing.)

【Technical support】 e-mail : cellqa.brc@riken.jp