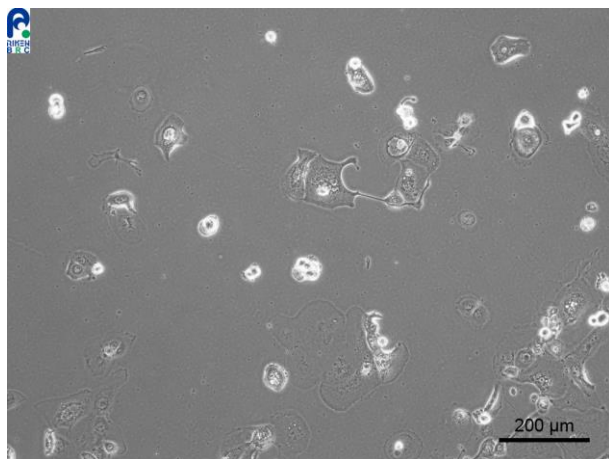


Application consideration

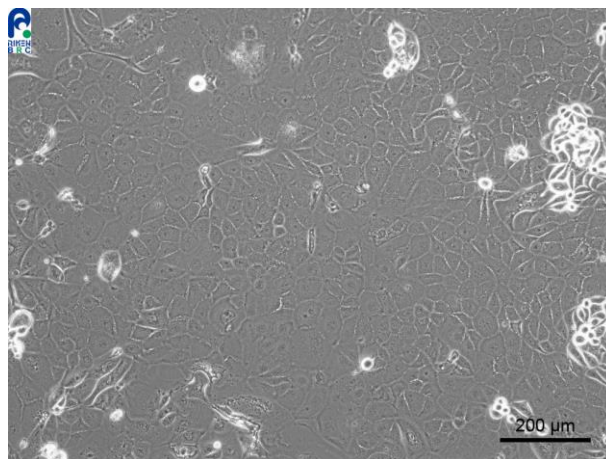
RCB1129 : TGBC1TKB

Please keep the following points in mind :

- Needs over 1 day to stabilize adhesion.
- Grow slowly.
- Don't change medium on the next day of thawing,
and keep observing cells for 1 week without medium change.



The condition just after plating
(Please wait for cell proliferation by
changing the medium.)



The condition of cell proliferation
(Required cell density for subculturing.)