

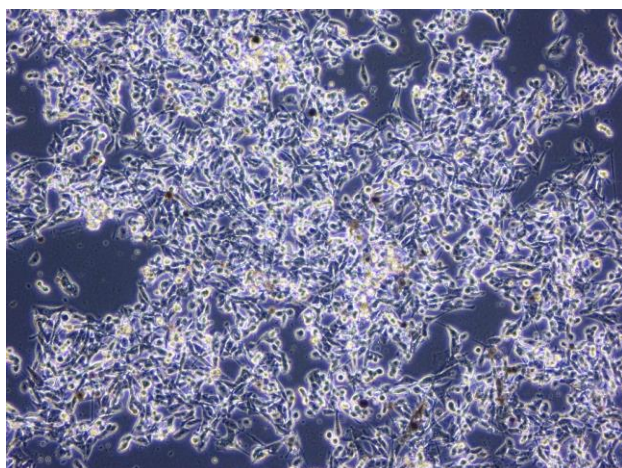
Application consideration

RCB 0557 : B16 melanoma 4A5

Please keep in mind following points:

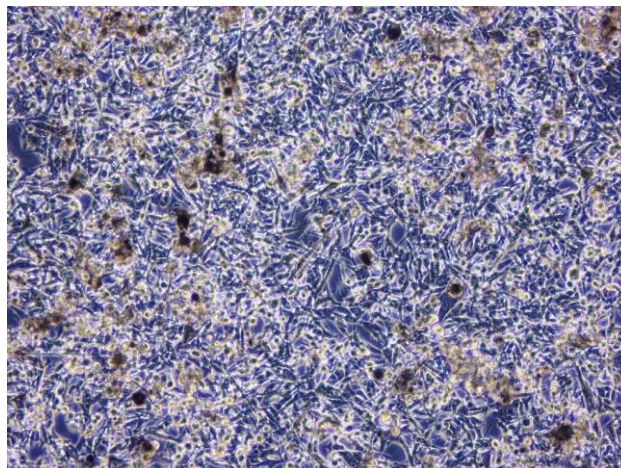
- **When the cells reach at high cell density, they start to differentiate and turn dark color, then produce dark pigments, melanin (See the photo "b" below).**

***The dark-colored cells start to detach from dishes as they grow, and the media gets dark color by melanin that the cells have produced. Therefore, please subculture cells before they reach confluence (preferably about 60 to 80% confluence).**



a. Early stage of differentiation

It is recommended to subculture the cells before dark-colored cells appear. It is still possible to subculture in this stage.



b. Differentiated cells

The cells tend to grow worse even after subculturing in this stage.

【Technical support】 e-mail : cellqa.brc@riken.jp