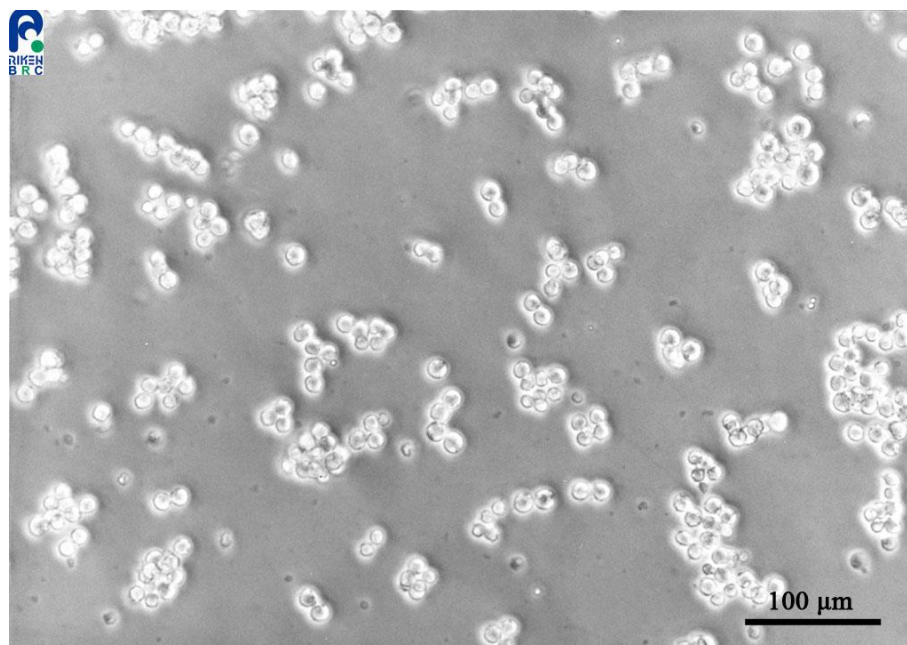


Application consideration

RCB0529 MtT/Se

Please keep the following points in mind:

- **This cell line adheres to culture dishes as weakly bound small floating round clusters.**
- **This cell line weakly adheres to the culture dishes / flasks.
It will take around 3-4 days to stabilize their adhesion after thawing,
so please observe them without changing the medium.**
- **This cell line grows slowly.**



【Technical support】 e-mail : cellqa.brc@riken.jp