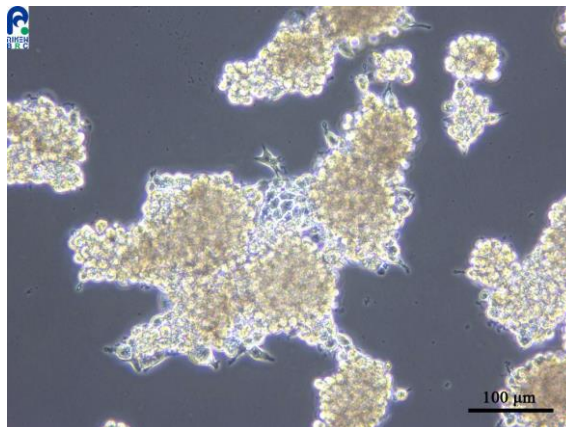
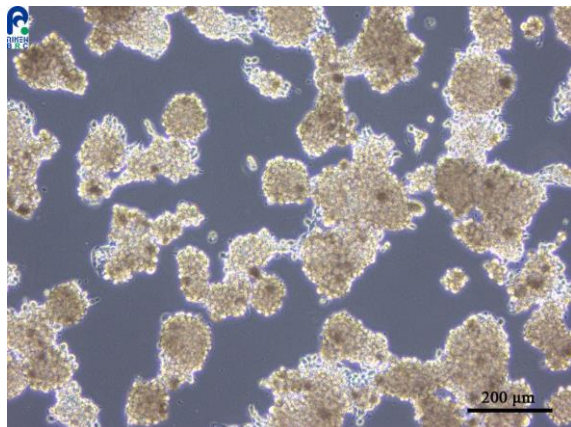


Application consideration

RCB0528 MtT/S

Please keep the following points in mind:

- **This cell line proliferates as a combination of floating round clusters and weakly adhering cells.**
- **This cell line weakly adheres to the culture dishes / flasks.
It will take around 3-4 days to stabilize their adhesion after thawing,
so please observe them without changing the medium.**
- **This cell line grows slowly.**



【Technical support】 e-mail : cellqa.brc@riken.jp