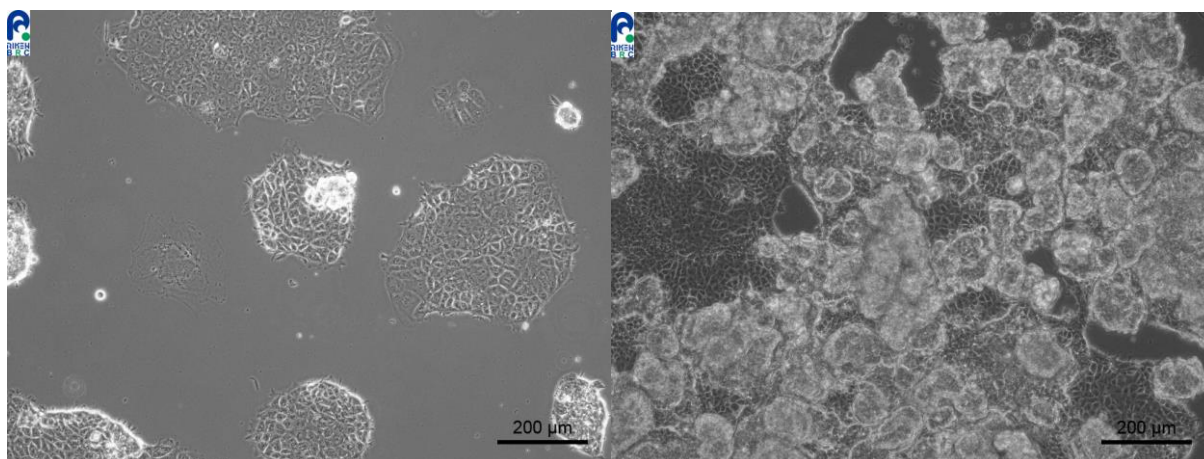


## Application consideration

### RCB0490 : NEC14

Please keep the following points in mind :

- Needs over 1 day to stabilize adhesion, therefore, please don't change medium on the next day of thawing and keep observing cells for 1 week without medium change.
- This cell line is adherent, however, the cells are easy to detach from culture vessel.
- The cells grow as separate aggregates. Please subculture cells when they reach 60 to 70% of the surface of culture vessel.



The cells attached to the culture vessel and are shown proliferating.

If the cells grow normally, they stack upon each other. (Please subculture the cells before they become like shown in the photo.)

【Technical support】 e-mail : [cellqa.brc@riken.jp](mailto:cellqa.brc@riken.jp)