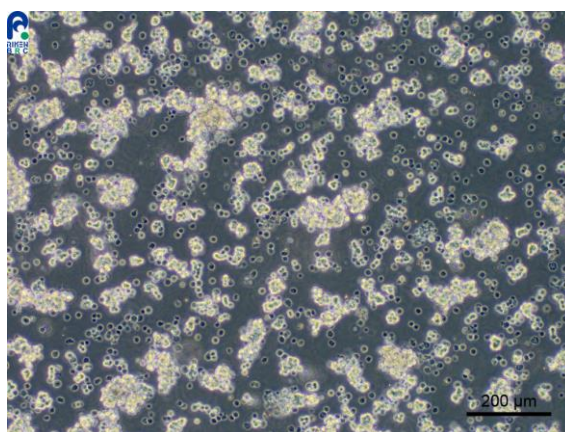


Application consideration

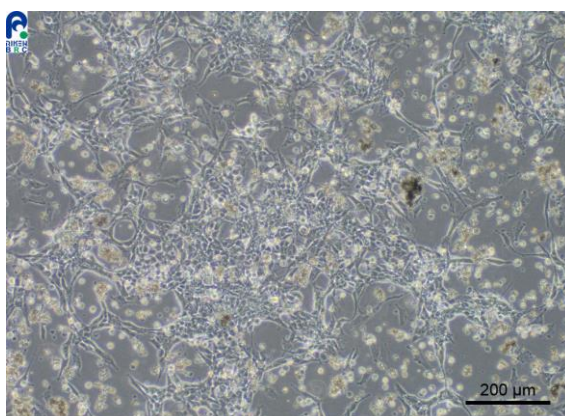
RCB0480 : NB69

Please keep the following points in mind.

- If the cells are poorly attached after thawing, please do not change medium on the next day of the thawing, and keep observing them for 1 week without medium change.
- The cells tend to undergo morphological changes and to result in a poor proliferation at a low cell density. Therefore, please be careful about cell density so as not to become too low.



Day 0 (just after plating)



Day 4

【Technical support】 e-mail : cellqa.brc@riken.jp