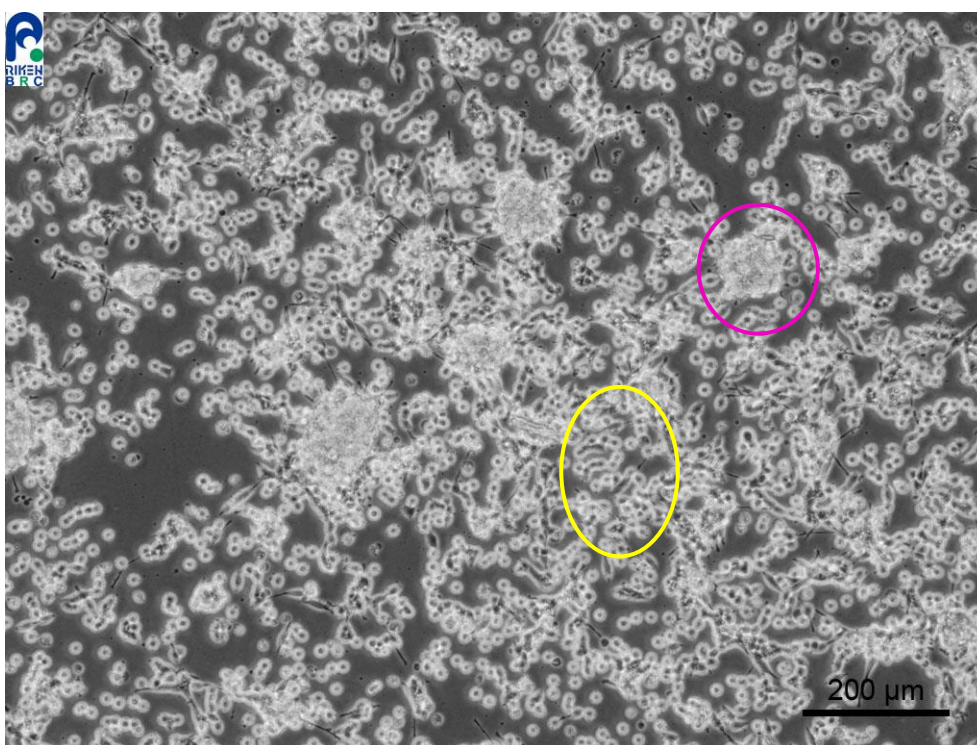


## Application consideration

### RCB0468 : Lu-135

Please keep the following points in mind:

- **This cell line grows as a combination of adherent and floating cells.**
- **Adherent cells can be also easily detached from culture vessels by pipetting up and down.**
- **When cells grow poorly after thawing, please passage cells by dilution without centrifugation.**



**Yellow** : Adherent cells

**Pink** : Floating cells

**【Technical support】** e-mail : [cellqa.brc@riken.jp](mailto:cellqa.brc@riken.jp)