

Application consideration

RCB0438 : LC-1/sq-SF

Please keep the following points in mind :

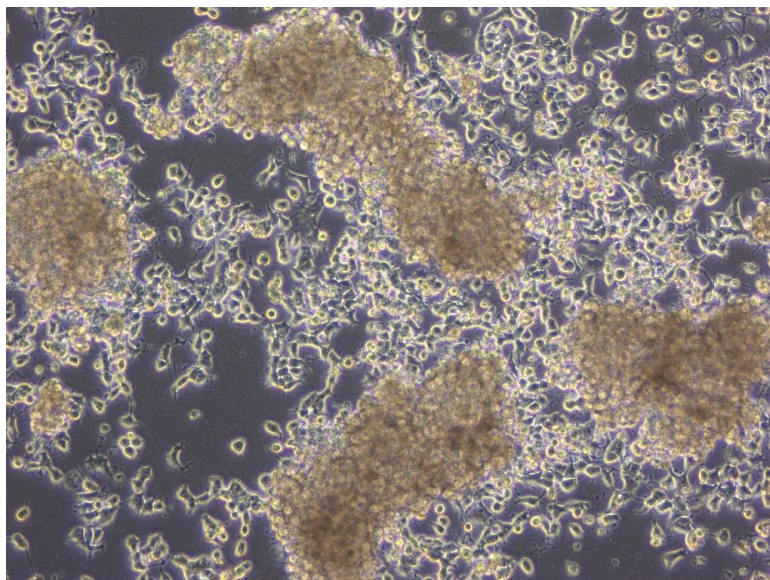
Please DO NOT use trypsin to detach cells for subculture

(Please detach cells by pipetting up and down GENTLY)

Cells grow as they attach weakly to dishes

**Please DO NOT use trypsin,
because these cells are cultured in serum-free media**

**If smaller amounts of adherent cells are present
during changing media, it is recommended that
floating cells be also transferred to dishes**



Adherent cells will clump together and float

【Technical support】 e-mail : cellqa.brc@riken.jp